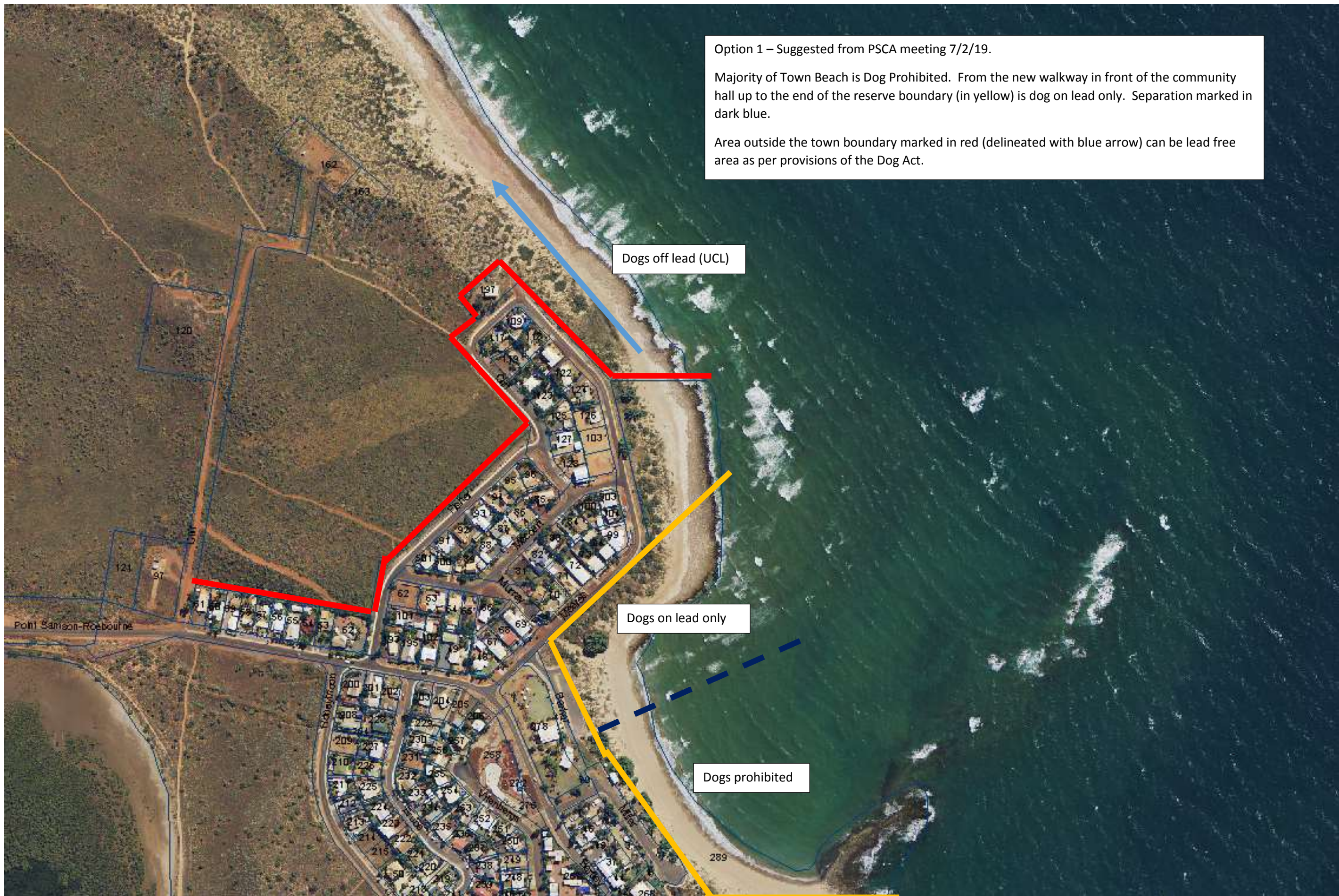


Option 1 – Suggested from PSCA meeting 7/2/19.

Majority of Town Beach is Dog Prohibited. From the new walkway in front of the community hall up to the end of the reserve boundary (in yellow) is dog on lead only. Separation marked in dark blue.

Area outside the town boundary marked in red (delineated with blue arrow) can be lead free area as per provisions of the Dog Act.





Option 2 – Alternative access point.

Majority of Town Beach is Dog Prohibited. From the sand walkway in front of Murray Street/9 Meares Drive) to the end of the reserve boundary (in yellow) is dog on lead only. Separation marked in dark blue.

Area outside the town boundary marked in red (delineated with blue arrow) can be lead free area as per provisions of the Dog Act.



Dogs off lead (UCL)

Dogs on lead only

Dogs prohibited



Option 3 – Based on objections from advertising

Whole of Town Beach is Dog Prohibited.

Area outside the town boundary marked in red (delineated with blue arrow) can be lead free area as per provisions of the Dog Act. Access is via steep path opposite 41 Meares Dve or from gravel park area at the end of Meares Dve.

Dogs off lead (UCL)

Dogs prohibited

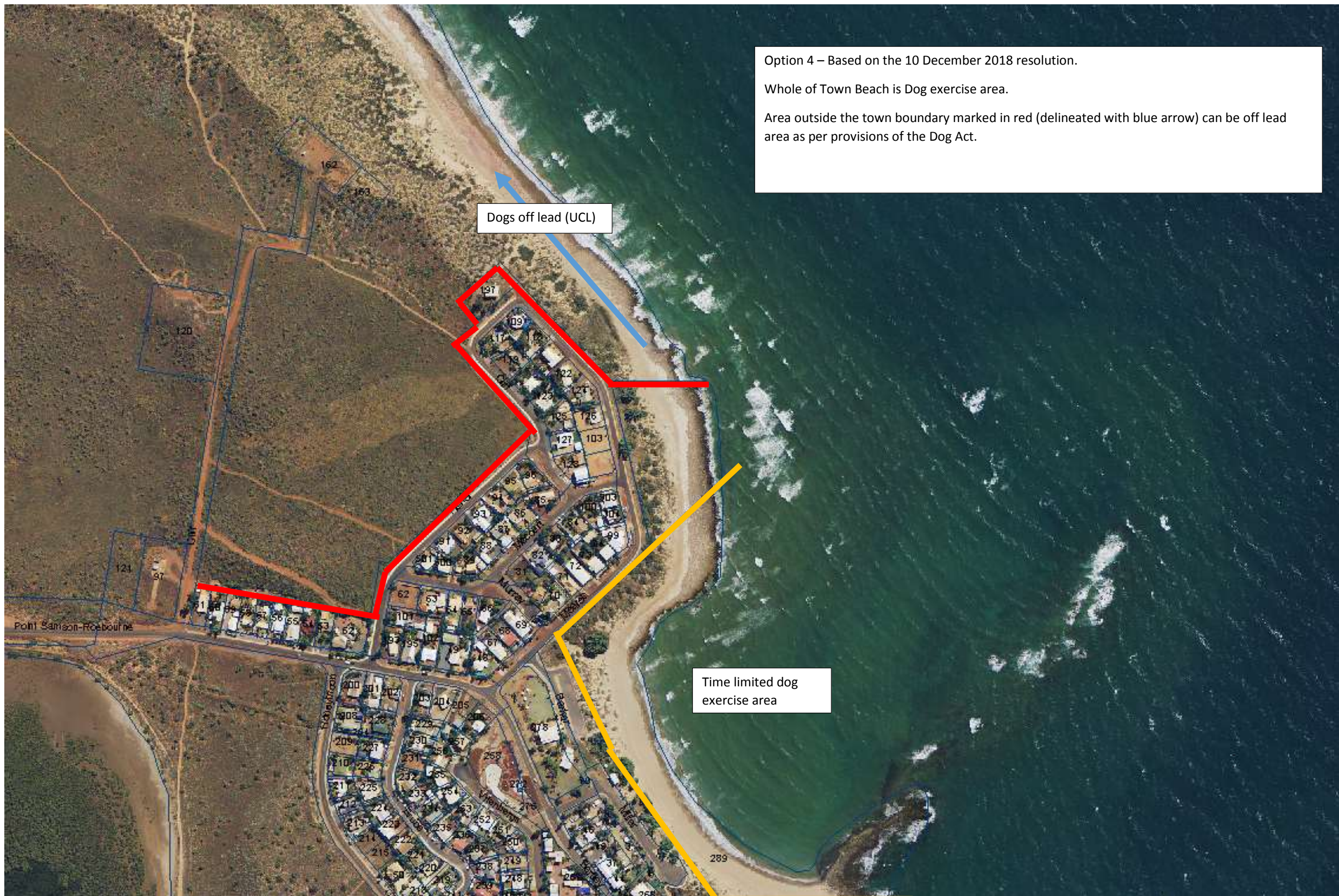




Option 4 – Based on the 10 December 2018 resolution.

Whole of Town Beach is Dog exercise area.

Area outside the town boundary marked in red (delineated with blue arrow) can be off lead area as per provisions of the Dog Act.



Dogs off lead (UCL)

Time limited dog exercise area