

11 MAR 2014










BY.



WORKS BEYOND THE BOUNDARY OF
LOT 7017 BY SHIRE OF ROEBOURNE

CIVIL ENGINEER'S DRAWING SK03
REV E FOR EXISTING AND DESIGN SITE
LEVELS AND CONTOURS

WOOD & GRIEVE DRAWING - DESIGN
CONTOURS & LOT 7017

-  SHIRE ELECTRIC LIGHT POLE
-  TELECOM PIT OR BOX
-  EXISTING GULLY PIT
-  BOLLARD
-  WHEEL STOP
-  FIRE HYDRANT
-  EXTERNAL LIGHTING POLE
-  PARKING BAY TO AS 5400 x 2.1m
-  DISABLED PARKING BAY TO AS 5400 x 3.6m

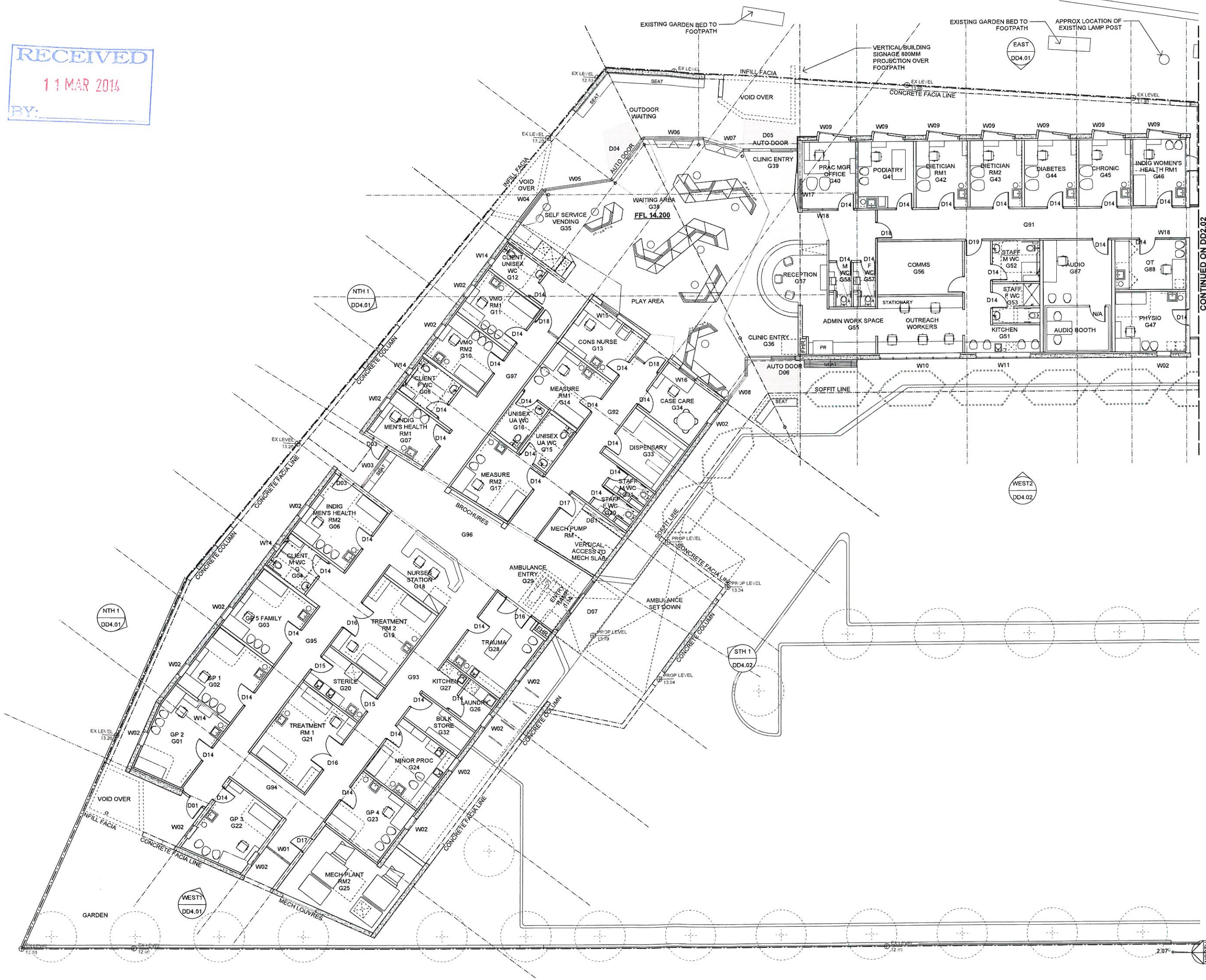
SMK SEMI-MOUNTABLE KERB
MK MOUNTABLE KERB
FK FLUSH KERB
BK BARRIER KERB
CON CONCRETE
MUL MULCH

CODA

TEL: (08) 9433 6000
www.coda-studio.com

NOTE: Check and verify all site levels and dimensions prior to fabrication, shop drawings, installation, on-site or off-site works. Report any discrepancies to builder immediately. If in doubt - AS

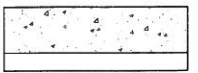
© CODA Studio Pty Ltd atf The DRAVA Trust ACN 119 667 300
A13069_SUPERCLINIC_2_SITE.vmx



WALL TYPE LEGEND

CONCRETE - C

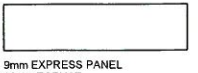
C1



PRECAST CONCRETE PANEL
20 GAP
64 METAL STUD
75 INSULATION
13mm PLASTERBOARD

EXTERNAL - E

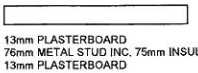
E1



9mm EXPRESS PANEL
36mm TOPHAT
150mm steel structure/INC. 75mm INSULATION
36mm TOPHAT
13mm PLASTERBOARD

METAL STUD PARTITIONS - P

P1 - Rw42



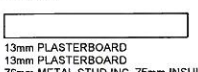
13mm PLASTERBOARD
76mm METAL STUD INC. 75mm INSULATION
13mm PLASTERBOARD

P2 - Rw46



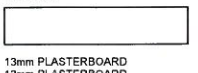
13mm PLASTERBOARD
13mm PLASTERBOARD
76mm METAL STUD INC. 75mm INSULATION
13mm PLASTERBOARD

P3 - Rw50



13mm PLASTERBOARD
13mm PLASTERBOARD
76mm METAL STUD INC. 75mm INSULATION
13mm PLASTERBOARD

P4 - Rw55



13mm PLASTERBOARD
13mm PLASTERBOARD
64mm METAL STUD INC. 75mm INSULATION
20mm GAP
64mm METAL STUD
13mm PLASTERBOARD
13mm PLASTERBOARD

REFERENCES

REFER TO ACOUSTIC:
GABRIELS ENVIRONMENTAL DESIGN DD REPORT
DATED 20.02.14

REFER TO MECHANICAL:
GEOFF HESFORD ENGINEERING ME100 REV C &
ME101 REV C

REFER TO STRUCTURAL:
CAPITAL HOUSE SK06_REV A, SK06_REV A

REFER TO ELECTRICAL:
BEST CONSULTANTS E100 - E106_REV B

REFER TO HYDRAULIC:
NDY H SK-RD-001-002_REV 2

E	07/04/14	FOR AUTHORITIES APPROVAL
D	25/02/14	FOR DD APPROVAL
C	17/02/14	FOR INFORMATION
B	14/02/14	FOR INFORMATION
A	07/02/14	FOR INFORMATION

CODA

10 ELDER PLACE, FREMANTLE
PO BOX 671, WA 6159

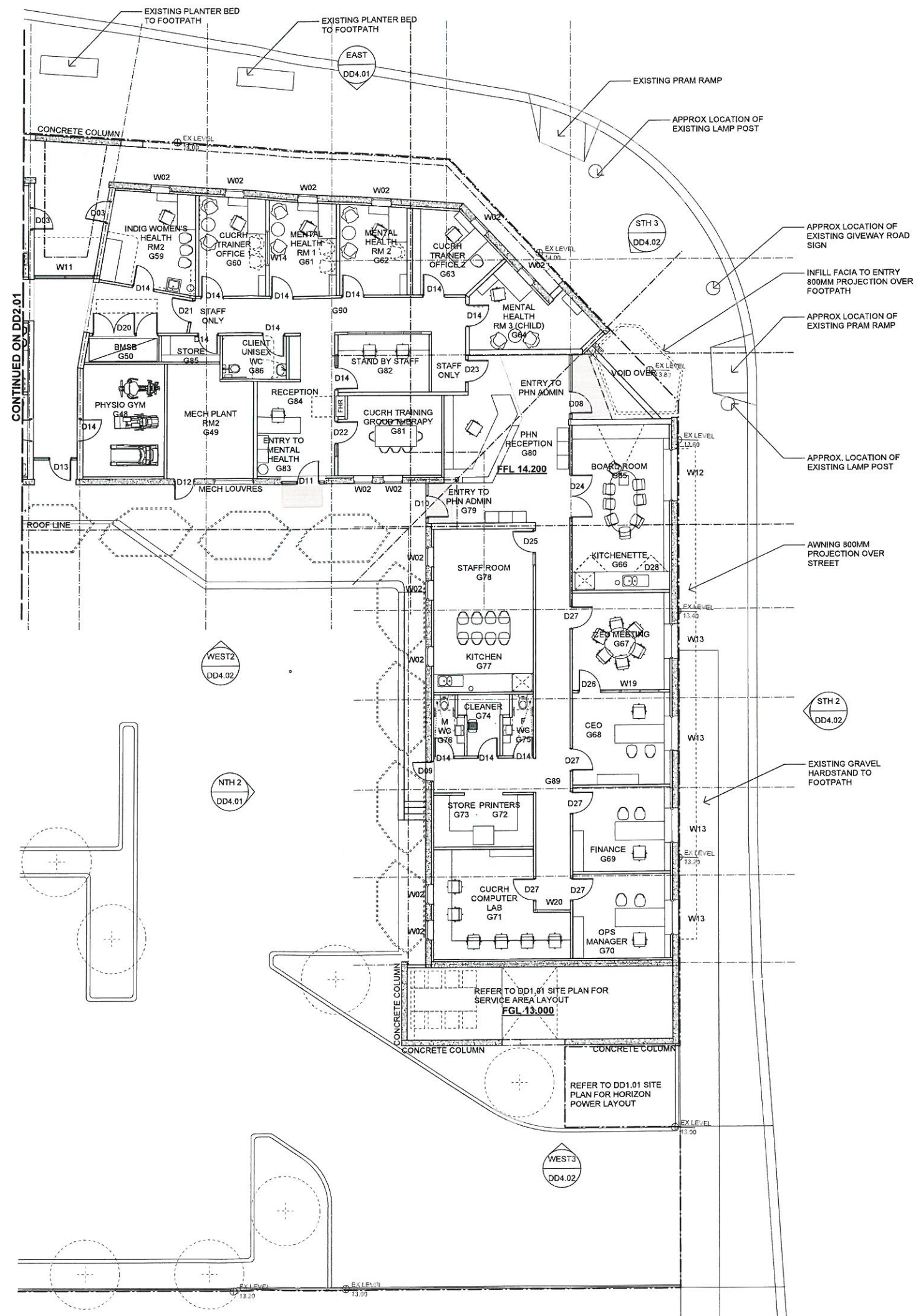
TEL: (08) 9433 6000
www.coda-studio.com

PROJECT	GP SUPER CLINIC 2		
SUBJECT	PILBARA HEALTH NETWORK		
SYMBOL	GROUND FLOOR PLAN PART A		
SCALE	1:100	REF	A13069
SCALE	1:200	REF	7/3/14
DATE	DI	DATE	DD2.01
REVISION	MB	DATE	E

NOTE: Check and verify all site levels and dimensions prior to fabrication, shop drawings, installation, on-site or off-site works. Report any discrepancies to builder immediately. If in doubt - ASK

© CODA Studio Pty Ltd all The DRAVA Trust ACN 119 867 300
A13069_SUPERCLINIC_2_PLAN.via

RECEIVED
11 MAR 2014
BY:



WALL TYPE LEGEND

CONCRETE - C

C1

PRECAST CONCRETE PANEL
20 GAP
64mm METAL STUD
75mm INSULATION
13mm PLASTERBOARD

EXTERNAL - E

E1

9mm EXPRESS PANEL
36mm TOPHAT
150mm steel structure/INC. 75mm INSULATION
36mm TOPHAT
13mm PLASTERBOARD

METAL STUD PARTITIONS - P

P1 - Rw42

13mm PLASTERBOARD
76mm METAL STUD INC. 75mm INSULATION
13mm PLASTERBOARD

P2 - Rw46

13mm PLASTERBOARD
13mm PLASTERBOARD
76mm METAL STUD INC. 75mm INSULATION
13mm PLASTERBOARD

P3 - Rw50

13mm PLASTERBOARD
13mm PLASTERBOARD
76mm METAL STUD INC. 75mm INSULATION
13mm PLASTERBOARD

P4 - Rw55

13mm PLASTERBOARD
13mm PLASTERBOARD
64mm METAL STUD INC. 75mm INSULATION
20mm GAP
64mm METAL STUD
13mm PLASTERBOARD
13mm PLASTERBOARD

REFERENCES

REFER TO ACOUSTIC:
GABRIELS ENVIRONMENTAL DESIGN DD REPORT
DATED 20.02.14

REFER TO MECHANICAL:
GEOFF HESFORD ENGINEERING ME100 REV C &
ME101 REV C

REFER TO STRUCTURAL:
CAPITAL HOUSE SK05_REV A, SK06_REV A

REFER TO ELECTRICAL:
BEST CONSULTANTS E100 - E106_REV B

REFER TO HYDRAULIC:
NDY H SK-R0-001-002_REV 2

E	07/04/14	FOR AUTHORITIES APPROVAL
D	25/02/14	FOR DD APPROVAL
C	17/02/14	FOR INFORMATION
B	14/02/14	FOR INFORMATION
A	07/02/14	FOR INFORMATION

CODA

10 ELDER PLACE, FREMANTLE
PO BOX 671, WA 6159

TEL: (08) 9433 6000
www.coda-studio.com

**GP SUPER CLINIC 2
PILBARA HEALTH
NETWORK**

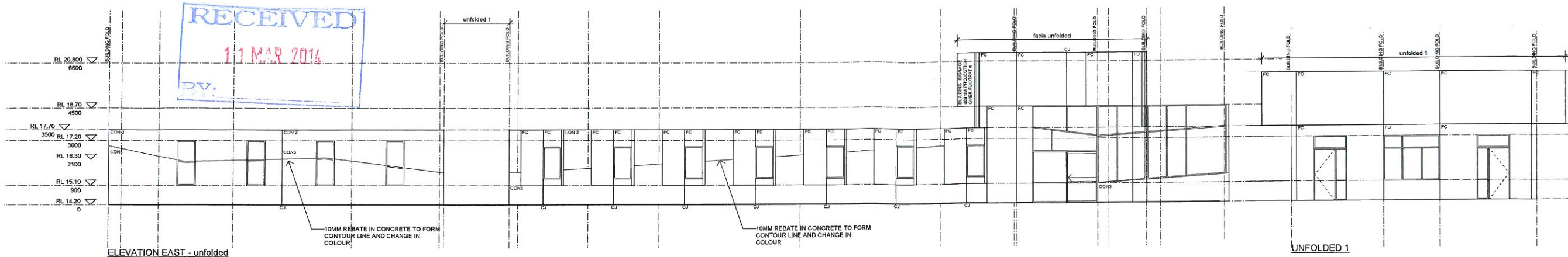
**GROUND FLOOR PLAN
PART A**

SCALE A1:1	1:100	PROJECT	A13069
SCALE A2:1	1:200	DATE PLOTTED	7/3/14
DATE	DI	DD2.02	E
REVISION	MB		

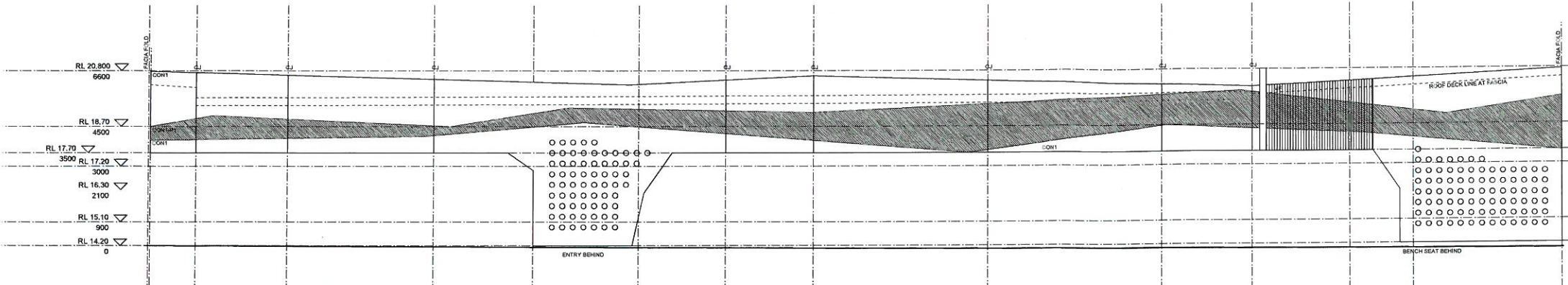
NOTE: Check and verify all site levels and dimensions prior to fabrication, shop drawings, installation, on-site or off-site works. Report any discrepancies to builder immediately. If in doubt - ASK

© CODA Studio Pty Ltd at The DRAVA Trust ACN 119 667 300
A13069_SUPERCLINIC_2_PLAN.vmr

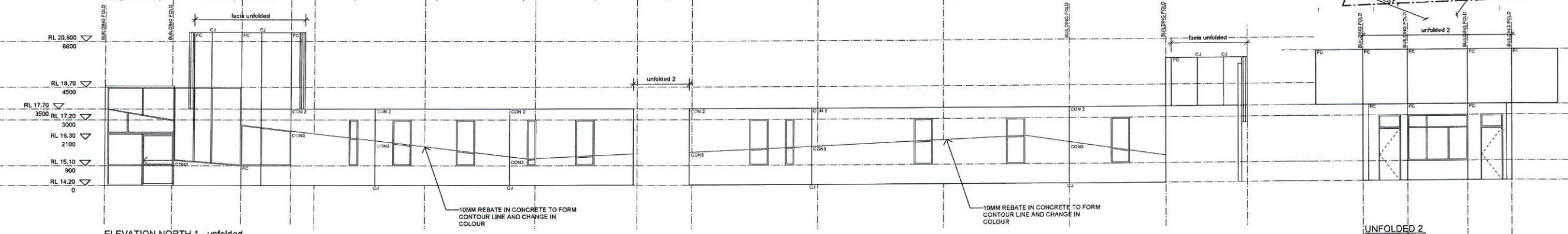
RECEIVED
11 MAR 2014
BY:



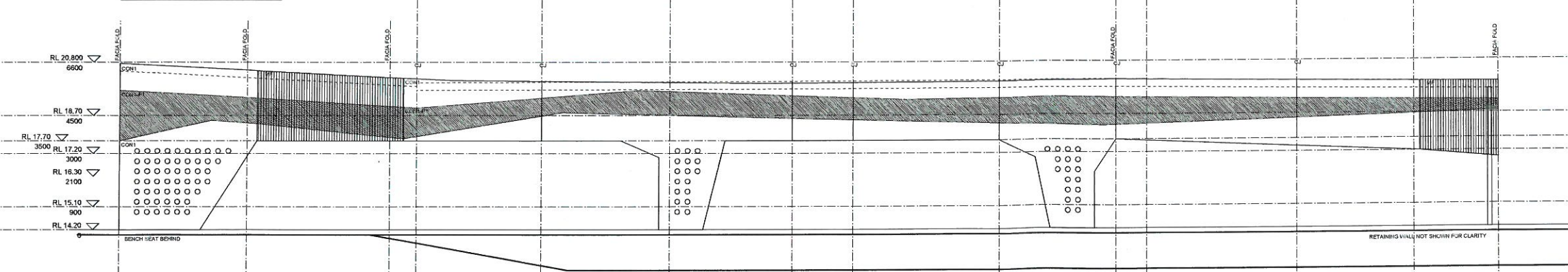
ELEVATION EAST - unfolded



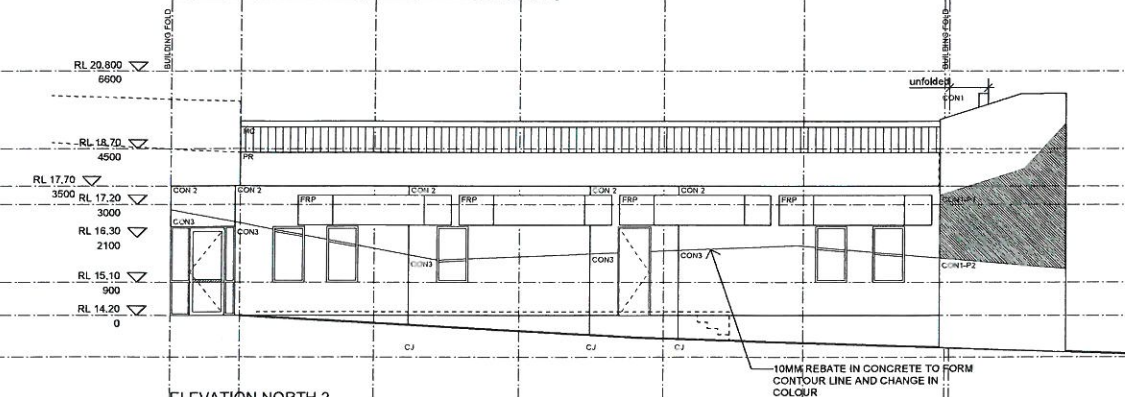
ELEVATION EAST - CONCRETE FACIA



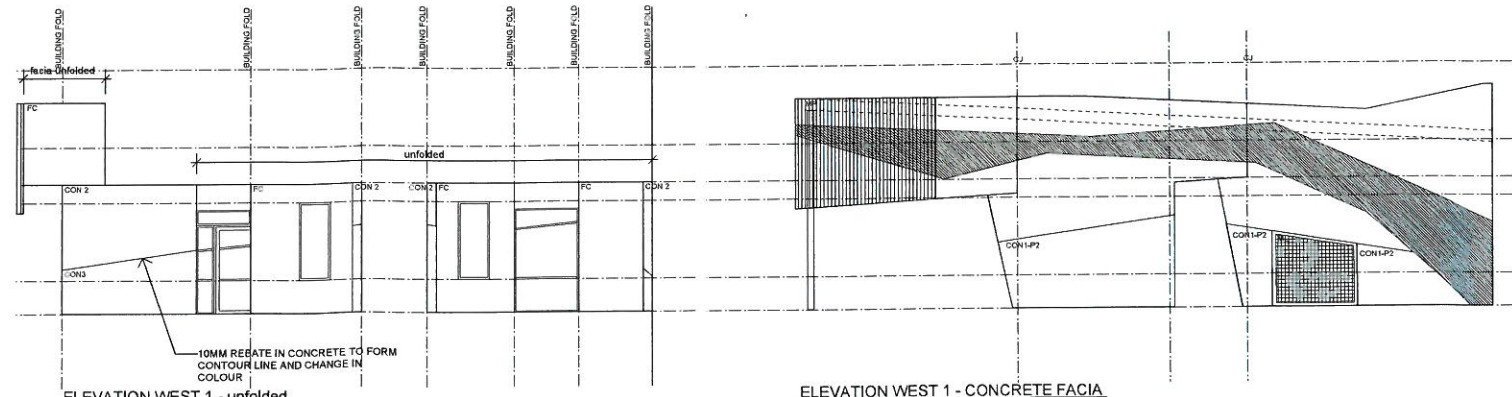
ELEVATION NORTH 1 - unfolded



ELEVATION NORTH 1 - CONCRETE FACIA - unfolded



ELEVATION NORTH 2



ELEVATION WEST 1 - unfolded

ELEVATION WEST 1 - CONCRETE FACIA

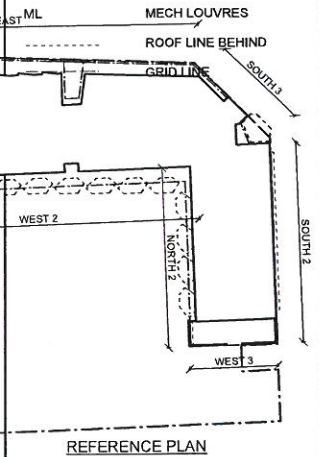
LEGEND

ABBREVIATIONS

AHD	AUSTRALIAN HEIGHT DATUM
FFL	FINISHED FLOOR LEVEL
RL	REDUCED LEVEL

MATERIAL ABBREVIATIONS

CON1	CONCRETE 1	0317
CON2	CONCRETE 2	0317
CON3	CONCRETE 3	0317
CON1 - P1	CON PATTERN1	0317
CON1 - P2	CON PATTERN 2	0317
CJ	CONST. JOINT	0317
MC	METAL CLADDING	0423
MF	METAL FACIA	
PR	PANEL RIB	0423
FC	FIBRE CEMENT	0431



REFERENCE PLAN

REFERENCES

REFER TO ACOUSTIC:
GABRIELS ENVIRONMENTAL DESIGN DD
REPORT DATED 20.02.14

REFER TO MECHANICAL:
GEOFF HESFORD ENGINEERING ME100 REV C
& ME101 REV C

REFER TO STRUCTURAL:
CAPITAL HOUSE RED-LINE MARKUP DATED
17.02.14

REFER TO ELECTRICAL:
BEST CONSULTANTS E100 - E106_REV B

REFER TO HYDRAULIC:
NDY H SK-R0-001-002_REV 2

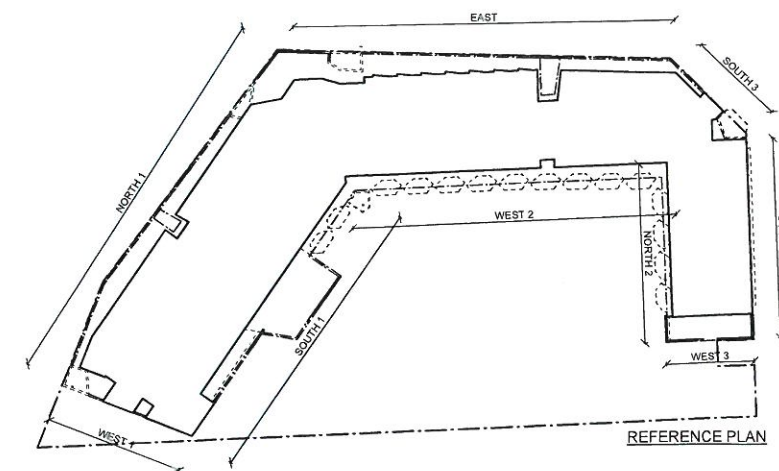
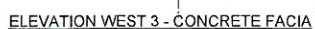
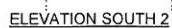
E	07/03/14	FOR AUTHORITIES APPROVAL
D	25/02/14	FOR DD APPROVAL
C	17/02/14	FOR INFORMATION
B	14/02/14	FOR INFORMATION
A	11/02/14	FOR INFORMATION

CODA

10 ELDER PLACE, FREMANTLE
PO BOX 671, WA 6159

TEL: (08) 9433 6000
www.coda-studio.com

PROJECT		GP SUPER CLINIC 2	
CLIENT		PILBARA HEALTH NETWORK	
REVISION		ELEVATIONS	
SCALE AT 1:100		DATE FOR 1:100	
SCALE AT 1:200		DATE FOR 1:200	
PROJECT		DATE	
DI		E	
MB		DD4.01	
NOTE: Check and verify all site levels and dimensions prior to fabrication, shop drawings, installation, on-site or off-site works. Report any discrepancies to builder immediately. If in doubt - ASK			
© CODA Studio Pty Ltd at The DRAVA Trust ACN 119 667 300			



REFERENCES

REFER TO ACOUSTIC:
GABRIELS ENVIRONMENTAL DESIGN DD
REPORT DATED 20.02.14

REFER TO MECHANICAL:
GEOFF HESFORD ENGINEERING ME100 REV C
& ME101 REV C

REFER TO STRUCTURAL:
CAPITAL HOUSE RED-LINE MARKUP DATED
17.02.14

REFER TO ELECTRICAL:
BEST CONSULTANTS E100 - E106_REV B

REFER TO HYDRAULIC:
NDY H SK-R0-001-002_REV 2

E	07/03/14	FOR AUTHORITIES APPROVAL
D	25/02/14	FOR DD APPROVAL
C	17/02/14	FOR INFORMATION
B	14/02/14	FOR INFORMATION
A	11/02/14	FOR INFORMATION

CODA

10 ELDER PLACE, FREMANTLE
PO BOX 671, WA 6159

TEL: (08) 9433 6000
www.coda-studio.com

PATIENT		GP SUPER CLINIC 2	
CLIENT		PILBARA HEALTH NETWORK	
ELEVATIONS			
SCALE 1 X 1	1:100	DATE SET	A13069
SCALE 4 X 1	1:200	DATE PRINTED	7/31/14
PAYEE	DI	REF	BOOK
DISCLOS	MB	DD4.02	E

NOTE: Check and verify all site levels and dimensions prior to fabrication, shop drawings, installation, on-site or off-site works. Report any discrepancies to builder immediately. If in doubt - ASK

© CODA Studio Pty Ltd atf The DRAVA Trust ACN 119 667 300
A13069 SUPERCLINIC 2 ELEVATIONS.vwx

RECEIVED
28 MAR 2014
BY:



RECEIVED
28 MAR 2014
BY:

