

**GHDWOODHEAD**

Architecture  
Interior Design  
Planning  
Urban Design  
Landscape Architecture

# Roebourne Streetscape Master Plan Stage 3 - Concept Design Report\_B

City of Karratha



May 2022



Contact  
Ian Pexton  
Director of Landscape Architecture  
T: +61 8 6222 8222  
M: +61 421 047 810  
E: Ian.Pexton@ghd.com

© GHDWoodhead Pty Ltd 2021  
This document is and shall remain the property of GHDWoodhead. Unauthorised use of this document in any form whatsoever is prohibited.  
Responsible Architect – [First Name] [Second Name] [State Registration Number]

Document Control

Rev No.	Author	Reviewer	Signature	Authorisation	Signature	Date
A	Reynold Tien	Michael Pearce		Ian Pexton		23.03.2022
B	Reynold Tien	Michael Pearce		Ian Pexton		20.05.2022

# Contents

Introduction	4
<b>Chapter 01</b>	
<b>Streetscape Option One</b>	
Concept Design Option One (Works with existing constraints)	7
Streetscape Option One Masterplan	8
<b>Chapter 02</b>	
<b>Streetscape Option Two</b>	
Concept Design Option Two ( No Holds Barred )	15
Streetscape Option Two Masterplan	16
<b>Chapter 03</b>	
<b>Streetscape Option Three</b>	
Concept Design Option Three (Freedom from Main Roads Constraints)	23
Streetscape Option Three Masterplan	24
<b>Chapter 04</b>	
<b>Technical Information</b>	
4.1 Utility Infrastructure	32
4.2 Stormwater Management	33
4.3 Site Amenities	34
4.4 Pedestrian & Vehicle Accessibility	35
4.5 River Access	36
4.6 River Dam	37
4.7 Traffic Speed Mitigations for Option One and Two Only	38
4.8 Entrance Signs	39
<b>Chapter 05</b>	
<b>Furniture and Material Specification</b>	
5.1 Materials	42
5.2 Furniture Selections	43
5.3 Pavement and Hardscape Selections	44
5.4 Shade Structures	45
5.5 Art Opportunities	46
5.6 Interpretation Opportunities	47
5.7 Tree Selections	48
5.8 Vegetation Selection	49
<b>Chapter 06</b>	
<b>Opinion of Probable Cost</b>	
6.1 Opinion of Probable Cost	52
<b>Appendices</b>	
Appendix A - Concept Design Option One	
Appendix B - Concept Design Option Two	
Appendix C - Concept Design Option Three	

# Introduction

**The City of Karratha is seeking to increase the quality of the streetscape and urban fabric of Roebourne (Yirramagardu) for the benefit of the town and its residents.**

**Project Overview**

The City’s vision is to enhance Roebourne’s identity by increasing the quality of the streetscapes to North West Coastal Highway, Roe Street and Sholl Street. Strengthening links to existing natural assets such as the Ngurin River, enhance amenity and provide opportunities for cultural, community voice and expression with in the town.

The project scope includes North West Coastal Highway from the town boundary in the east incorporating Roe Street, up to the intersection with Cherratta Road to the South. Sholl Street from the intersection with North West Coastal Highway up to Queen Street. Including Queen, Padbury and Wellard cross streets.

In an regional town context, street design must meet the needs of community, people walking, cycling, taking transit, doing business, providing local and tourism services, parking and driving. The designs in this report take into consideration the constraints and opportunities and reflect the cultural diversity found within the town.

Extensive site analysis, condition reporting and community consultation has been undertaken by GHD and the City. This information has been incorporated to ensure the design outcomes are based on the communities wants, needs, respect the cultural requirements and are grounded by the local climate, environmental conditions.

Streetscapes Options One and Two incorporate the existing condition and use of North West Coastal Highway and Roe Street for heavy vehicles.

Streetscape Option Three looks at the opportunities created by removing heavy vehicles from Roe Street through the creation of a ring road. This change of ownership and classification will free up the design possibilities. Enabling the creation of a pedestrian orientated streetscape and town centre, with the focus on the local community.

The project will emphasise the town's identity through the redesign of the streetscapes and surrounding associated landscape. The designs incorporate local history, stories and culture, expressed through the use of local materials, plants, artwork, language and interpretation information. Key entry points are proposed to be marked with large town signs/ artwork, to identify the town boundaries to welcome home locals and travellers.

With a rich cultural history, Roebourne offers many opportunities to integrate stories and art into the town's fabric. Which will encourage locals and tourists to stop linger and explore. To achieve this the City will need to work closely with the Ngarluma and Yindjibarndi indigenous communities, community organisations, artists and a interpretation consultant to define the artwork and interpretation scope, design, implementation and management.





Our commitment to Western Australian local communities and experience in regional town revitalisation will assist the City of Karratha to realise the transformation potential of Roebourne for the benefit of the community and the region.

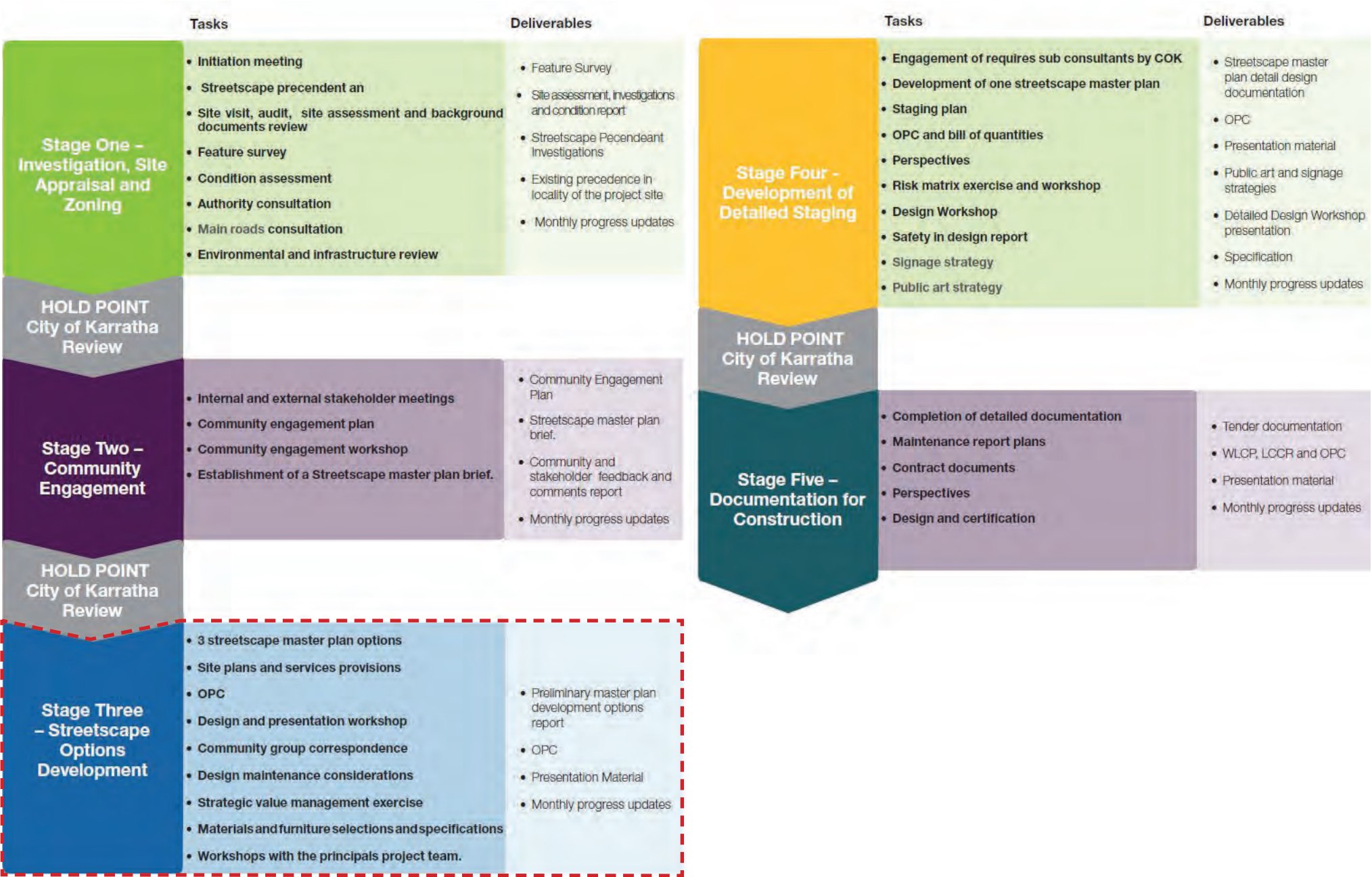
Project stages

The scope of works is divided into five project stages. The diagram to the right shows the activities and deliverables to be completed at each stage. This report consists of the required information that correspond to our deliverables for Stage 3.

The purpose of this report is to outline the 3 streetscape masterplan options, including proposed materials, furniture, plant species and types, plus associated technical and costing information.

This report is the companion document to the Roebourne Streetscape Stage 1 Site Analysis and Condition Report and Roebourne Streetscape Design Briefing Report.

Following client review and feedback this report will be refined in Stage 4 into the final approved streetscape masterplan.





## Chapter 01

### Streetscape Option One

01





# Concept Design Option One (Works with existing constraints)



**Option One is based on an approach that works with the existing constraints of North West Coastal Highway, Roe Street being the heavy and oversized vehicle route. It includes pedestrian and vehicle based design options to improve safety for the town, along with place making and improved amenity. Creating a streetscape and town centre that reflects the unique qualities of Yirramagardu to increase the identity and liveability of the town.**

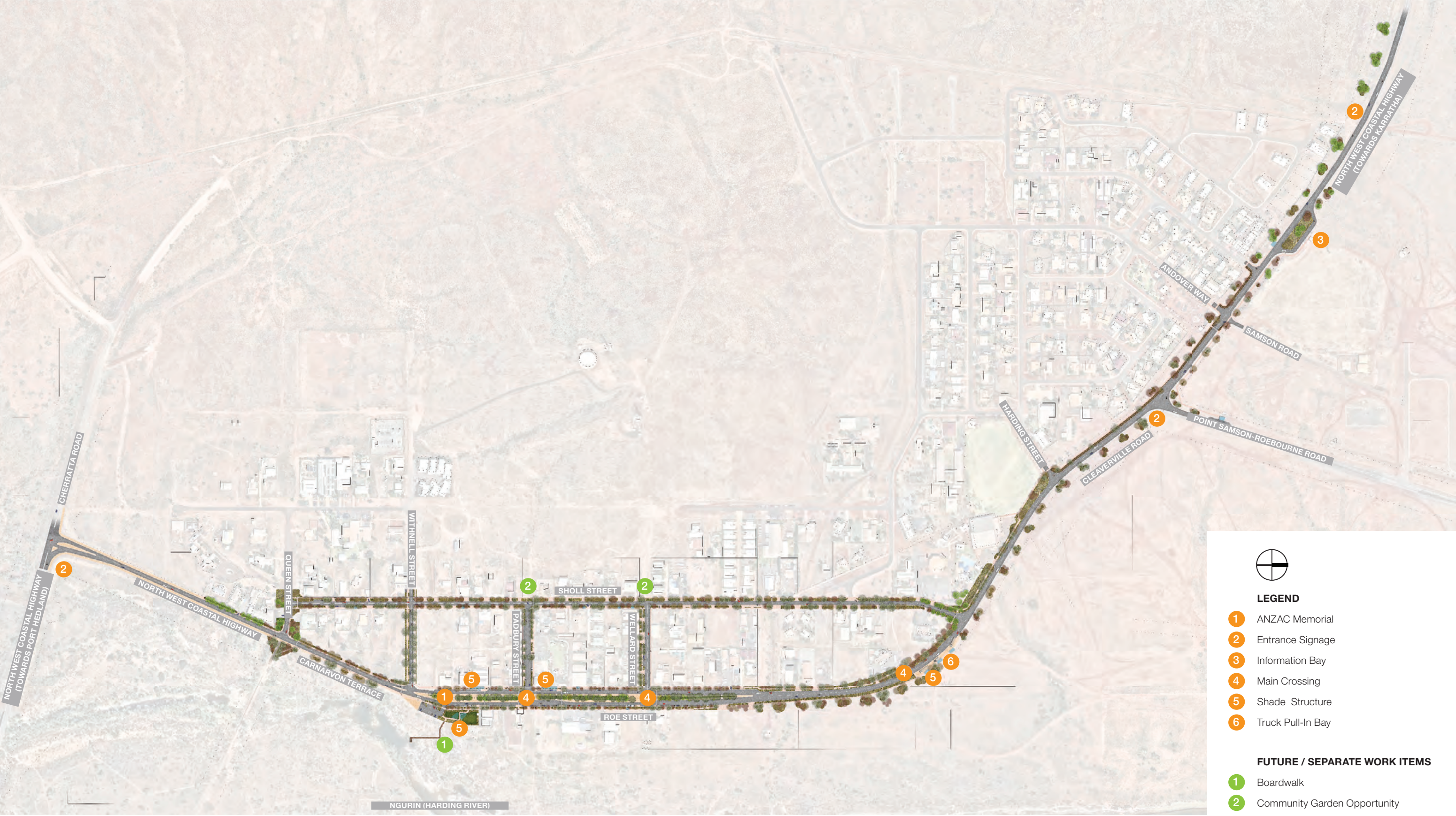
## **Concept Design Option One:**

1. Streetscape improvements to Roe Street, including retention of existing and increased street tree and low shrub/ground cover planting, new seating and shade structures, defined crossing points, upgrades to key intersections and Jubilee Park.
2. Streetscape improvement to Sholl, Wellard and Padbury streets, including road narrowing through widening of the verges to accommodate street tree and low shrub/ground cover planting, inclusion of seating and shade structures with defined crossing points.
3. Inclusion of language, stories and histories, through art, interpretation information, plant species and materials.
4. Planting and other natural features for shading and seating to the eastern portion of North West Coastal Highway.
5. Infill planting of street trees and low shrub/ground cover planting to traffic islands and medians
6. Proposed Yirramagardu Entrance signs at key approach locations.
7. Retention and revitalization of existing information bay at the eastern approach to town.
8. Boardwalk connection from Jubilee Park to the Ngurin River, incorporating interpretation information. (Future separate work item)
9. Introduction of reticulation to key areas to assist establishment and ongoing maintenance
10. Upgrade and formalize all pedestrian crossings to be compliant to Australian Standards. Incorporate median breaks, line marking, lighting and signs to improve driver awareness and pedestrian safety.
11. Speed reduction interventions through narrowing of road lanes and intersections, line marking and improved signs. Interventions will not impact the required road widths for heavy and oversize vehicles.





# Streetscape Option One Masterplan







#### LEGEND

- 1 Concrete Footpath
- 2 Crossing at Grade
- 3 Low Shrub Planting with Local Boulders
- 4 Turf
- 5 Trees
- 6 Compacted Gravel



Roe Street and Queen Street / De Grey Street intersection  
Proposed footpaths, planting frames and provide better access to the bush tucker trail



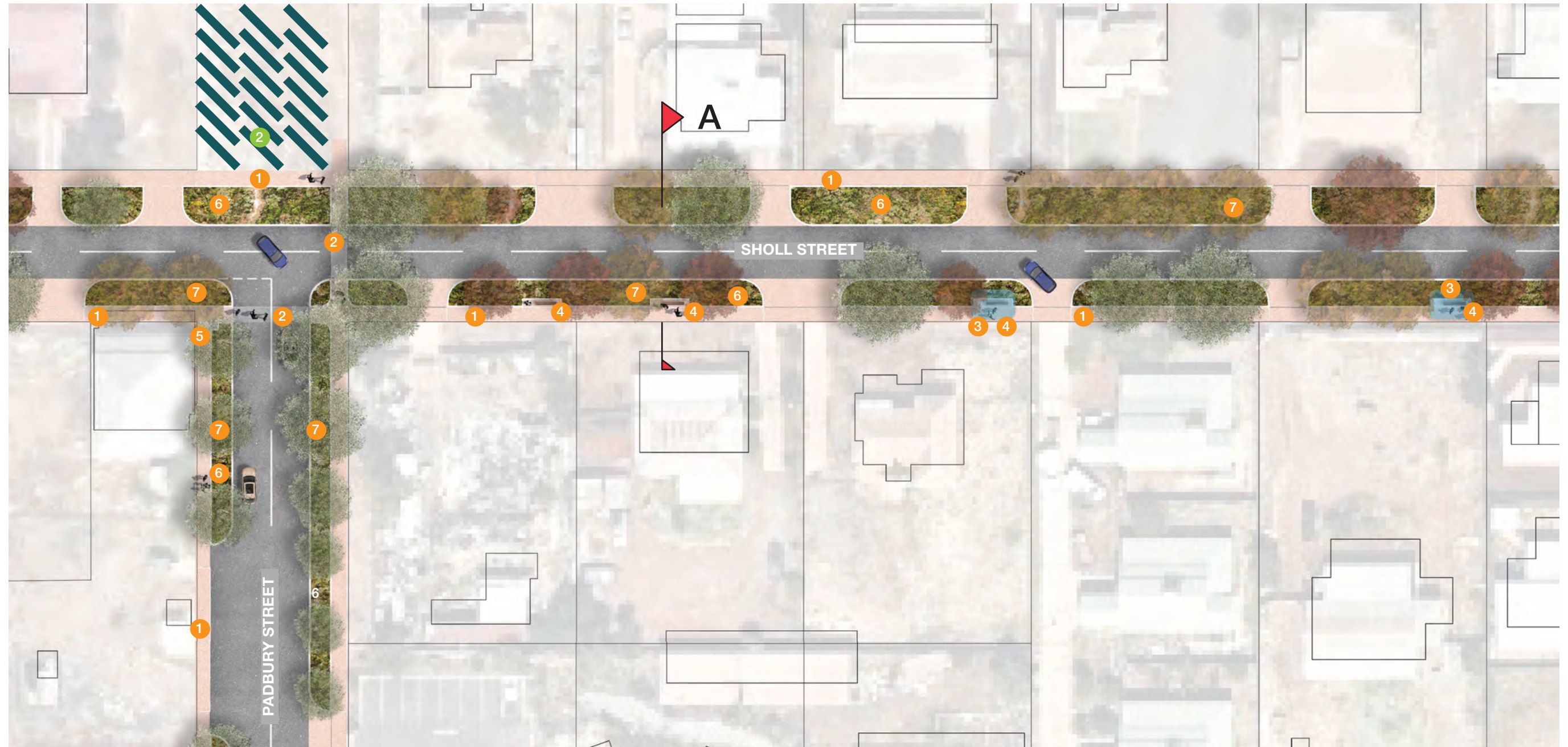
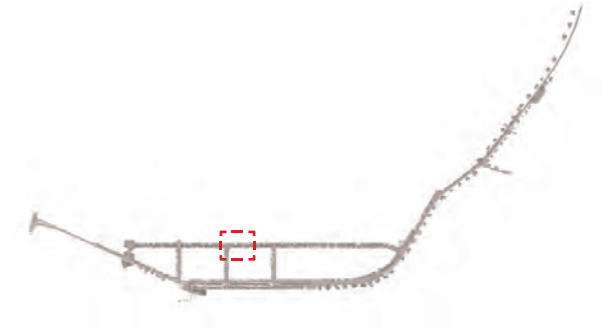


#### LEGEND

- 1 Concrete Footpath
- 2 Crossing at Grade
- 3 Shade Structure
- 4 Seating / Communal Seating
- 5 Bin
- 6 Low Shrub Planting with Local Boulders
- 7 Trees

#### FUTURE / SEPARATE WORK ITEMS

- 1 Boardwalk
- 2 Community Garden Opportunity



Sholl Street and Padbury Street intersection

Widening of verges to narrow the roadway, incorporate street trees, planting, seating and shade to improve amenity





#### LEGEND

- |  |                          |
|--|--------------------------|
| 1 Concrete Footpath                      | 9 Compacted Gravel       |
| 2 Crossing at Grade                      | 10 Parallel Parking Bays |
| 3 Shade Structure                        | 11 DDA Parking Bays      |
| 4 Seating / Communal Seating             | 12 Caravan Parking       |
| 5 Bin                                    | 13 Car Park              |
| 6 Low Shrub Planting with Local Boulders | 14 ANZAC Memorial        |
| 7 Turf                                   | 15 Existing Toilet Block |
| 8 Trees                                  |                          |

#### FUTURE / SEPARATE WORK ITEMS

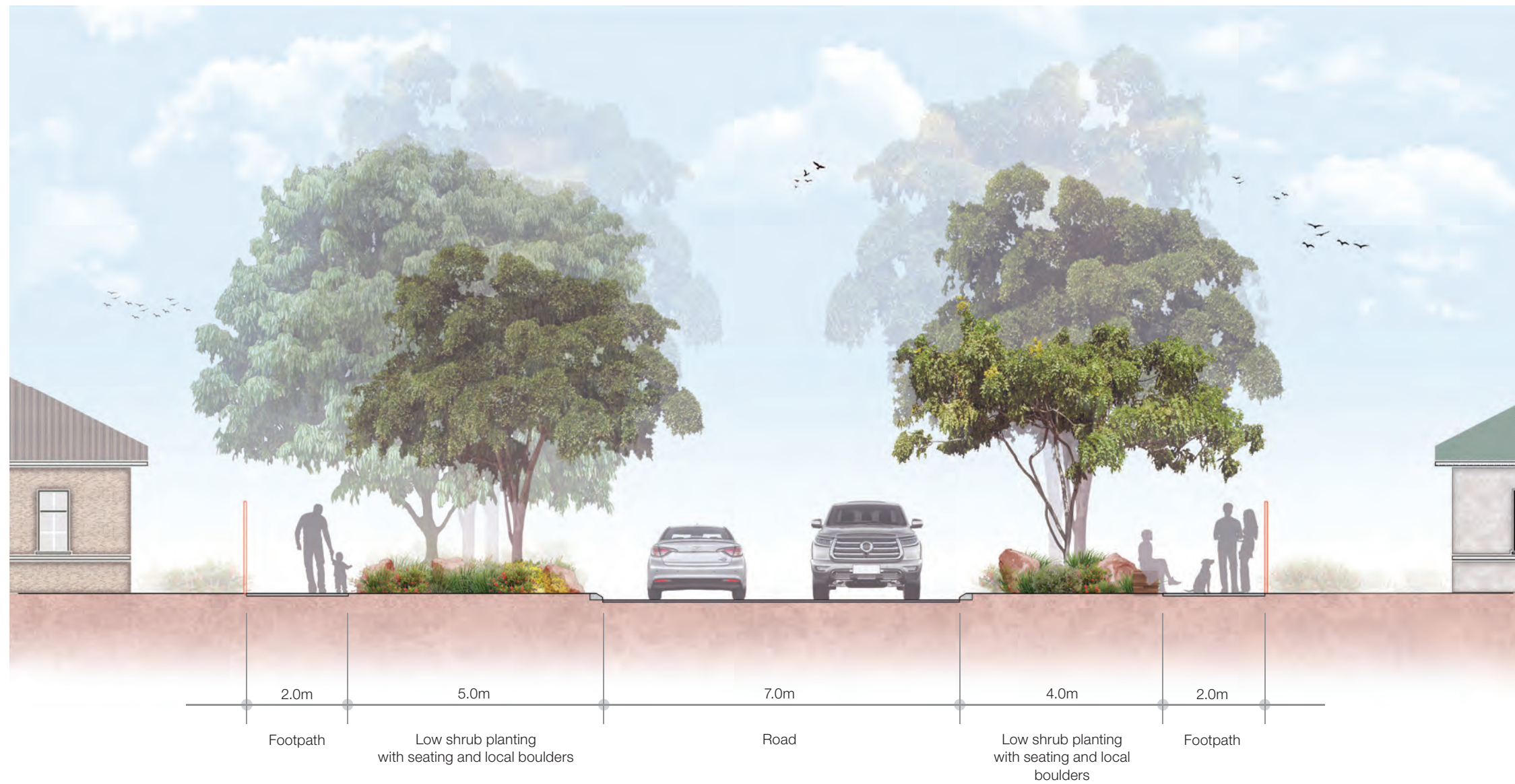
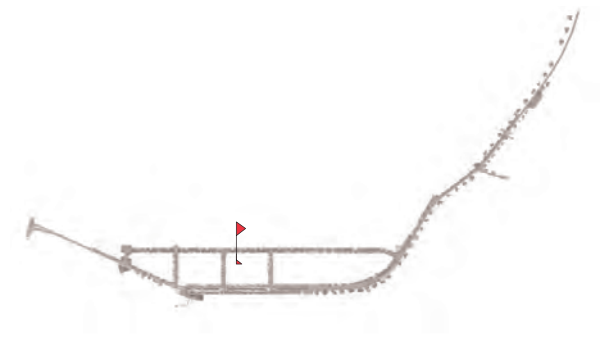
- |                                |
|--------------------------------|
| 1 Boardwalk                    |
| 2 Community Garden Opportunity |



Roe Street and Padbury Street intersection

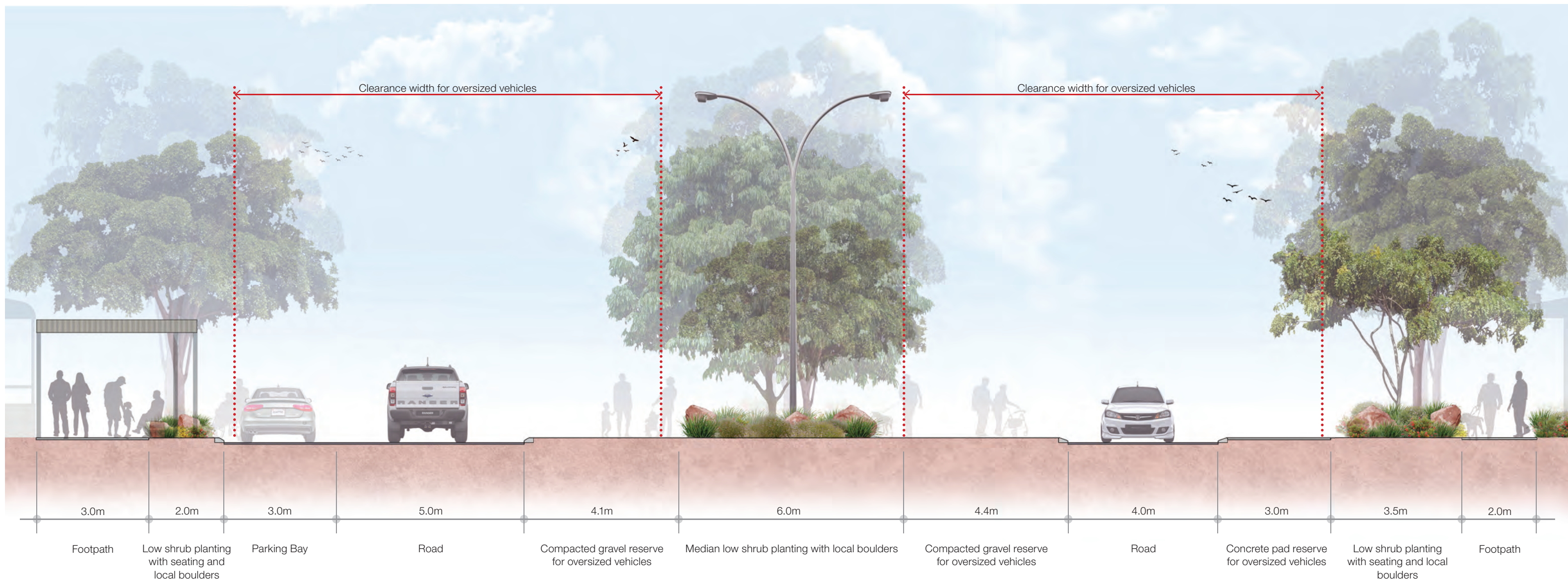
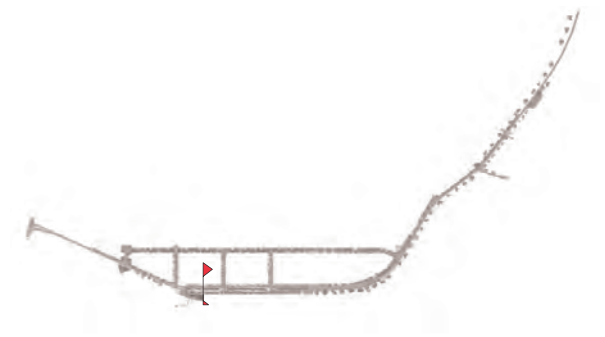
Street trees on both sides of the street provide shade with shade structures, seating, improved pedestrian footpaths, upgraded Jubilee Park with a boardwalk providing access to the river





**Section A - Sholl Street**





Section B - Roe Street





## Chapter 02

### Streetscape Option Two

# 02



# Concept Design Option Two ( No Holds Barred )



**Option Two is based on an no holds barred approach that works with the existing constraints of North West Coastal Highway and Roe Street being the heavy/oversized vehicle route. It includes pedestrian and vehicle based design options to improve safety for the town. Along with all the projects and design opportunities identified during the community consultation, Site Analysis and Condition Report, City requirements and input stage. Building on the Option One design, it adds in further place making, amenity and planting. To increase the identity and liveability of the town. Creating a streetscape, town centre and larger landscape that reflects the unique qualities of Yirramagardu.**

## Concept Design Option Two :

1. Streetscape improvements to Roe Street including total road redesign, with new parking arrangement. The retention of existing trees with new street tree and low shrub/ground cover planting, new seating and shade structures, defined crossing points, upgrades to key intersections and Jubilee Park.
2. Streetscape improvement to Sholl, Wellard and Padbury streets, including road narrowing through widening of the verges and inclusion of a median to accommodate street tree and low shrub/ground cover planting. The inclusion of seating, shade and defined crossing points.
3. Creation of meeting and gathering spaces throughout the town integrated into the streetscape at appropriate locations.
4. Inclusion of language, stories and histories, through art, interpretation information, plant species and materials.
5. Complex earth mounding arrangements with planting and other natural features for shading and seating to the eastern portion of North West Coastal Highway. To assist in the identification of the town and provide a change in landscape typology within the town extents.
6. Infill planting of street trees and low shrub/ground cover planting to existing traffic islands and medians
7. Proposed Yirramagardu Entrance signs at key approach locations.
8. Retention and revitalization of existing information bay at the eastern approach to town.
9. Boardwalk connection from Jubilee Park to the Ngurin River, incorporating interpretation information. Providing access to the Ngurin River at multiple locations, strengthening the community's connections to the river. With the possibility of creating a Lower Ngurin Dam to provide year round water in the section of river adjacent to town center and to control flooding. (Future separate work item and cultural approval required)
10. Acknowledgment of the Old Reserve with improved connections to the town.
11. Introduction of reticulation to key areas to assist establishment and ongoing maintenance.
12. Upgrade and formalize all pedestrian crossings to be compliant to Australian Standards. Incorporate median breaks, line marking, lighting and signs to improve driver awareness and pedestrian safety.
13. Speed reduction interventions through narrowing of road lanes and intersections, line marking, improved signs and radar speed signs. Interventions will not impact the required road widths for heavy and oversize vehicles.



# Streetscape Option Two Masterplan

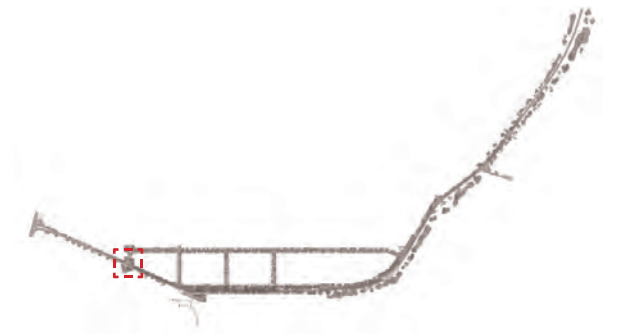






# LEGEND

- 1 Concrete Footpath
- 2 Crossing at Grade
- 3 Low Shrub Planting with Local Boulders
- 4 Turf
- 5 Trees
- 6 Compacted Gravel



Roe Street and Queen Street / De Grey Street intersection  
Proposed footpaths, planting frames and provide better access to the bush tucker trail



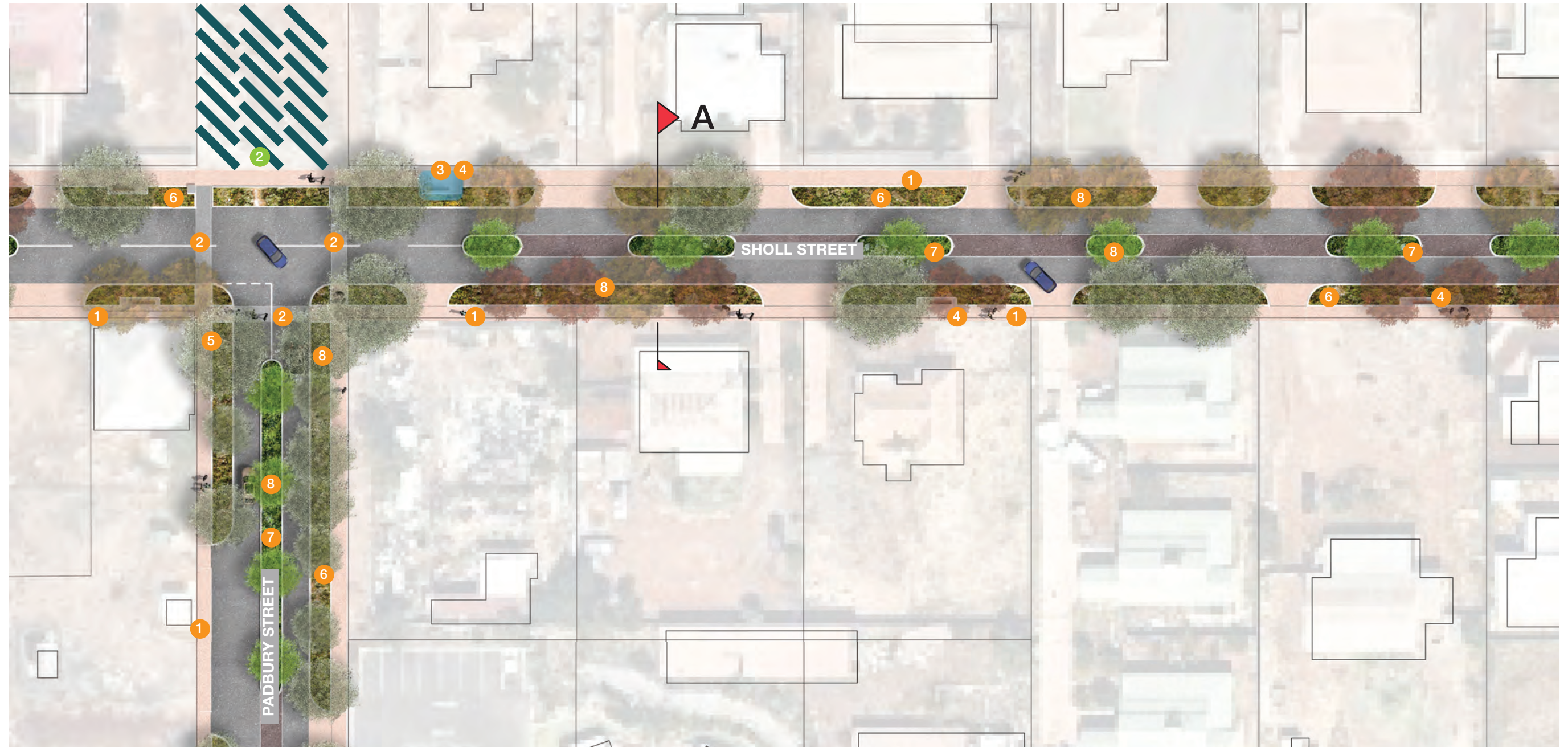
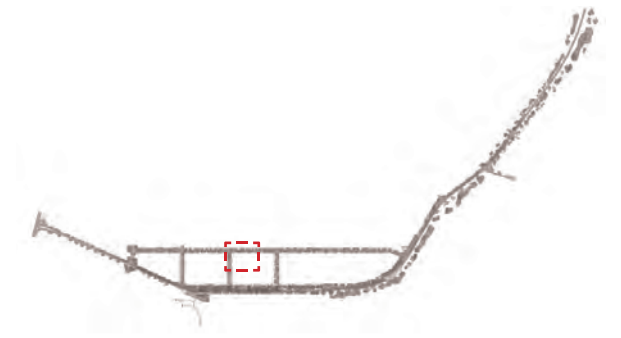


#### LEGEND

- 1 Concrete Footpath
- 2 Crossing at Grade
- 3 Shade Structure
- 4 Seating / Communal Seating
- 5 Bin
- 6 Low Shrub Planting with Local Boulders
- 7 Median Low Shrub Planting
- 8 Trees

#### FUTURE / SEPARATE WORK ITEMS

- 1 Boardwalk
- 2 Community Garden Opportunity



Sholl Street and Padbury Street intersection

Widening of verges and the inclusion of a median to narrow the roadway, incorporate street trees, planting, seating and shade to improve amenity



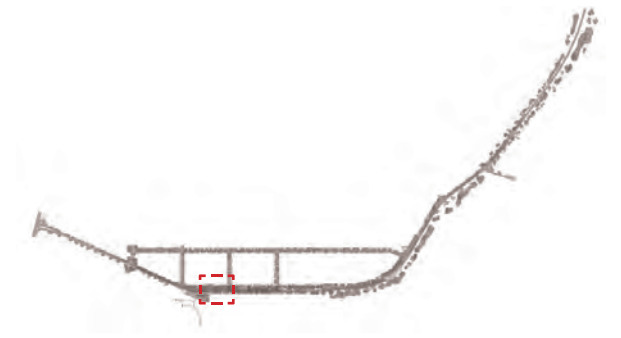


#### LEGEND

- 1 Concrete Footpath
- 2 Crossing at Grade
- 3 Shade Structure
- 4 Seating / Communal Seating
- 5 Bin
- 6 Low Shrub Planting with Local Boulders
- 7 Turf
- 8 Trees
- 9 Compacted Gravel
- 10 Parallel Parking Bays
- 11 DDA Parking Bays
- 12 Car Park
- 13 ANZAC Memorial

#### FUTURE / SEPARATE WORK ITEMS

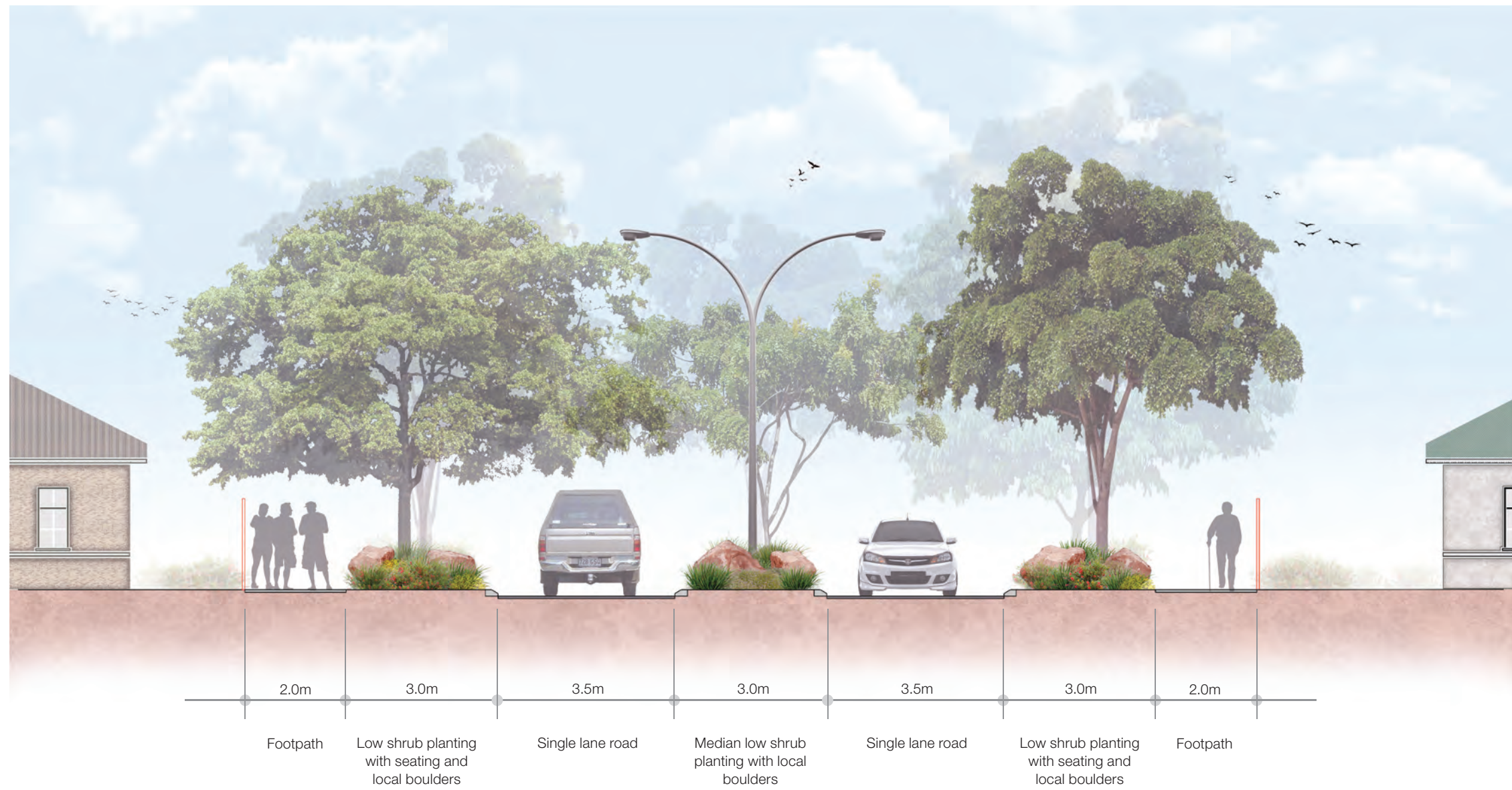
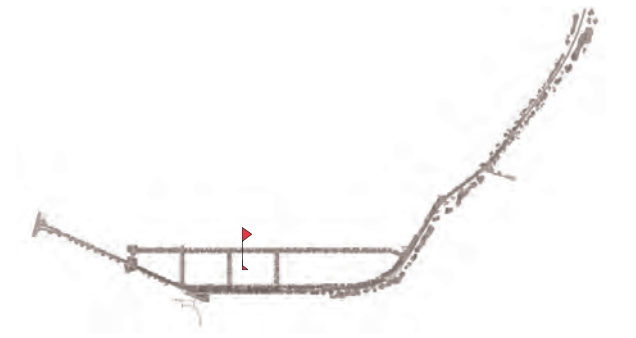
- 1 Boardwalk
- 2 Community Garden Opportunity



Roe Street and Padbury Street intersection

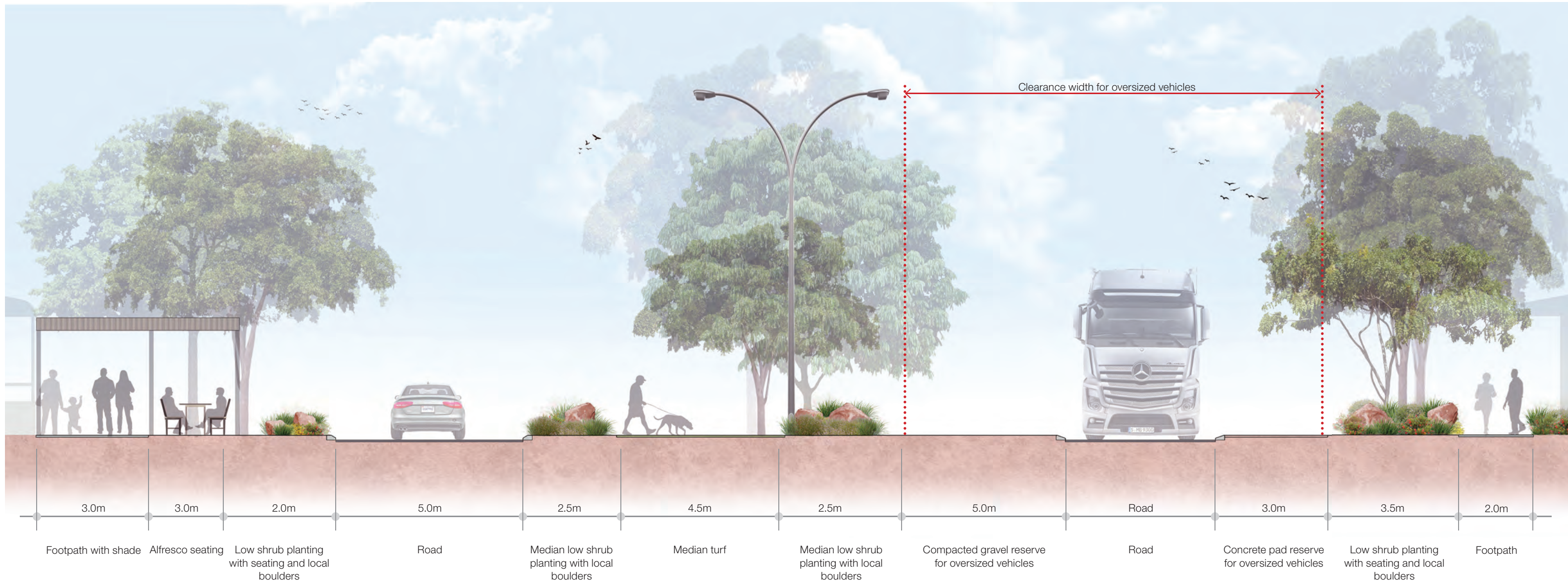
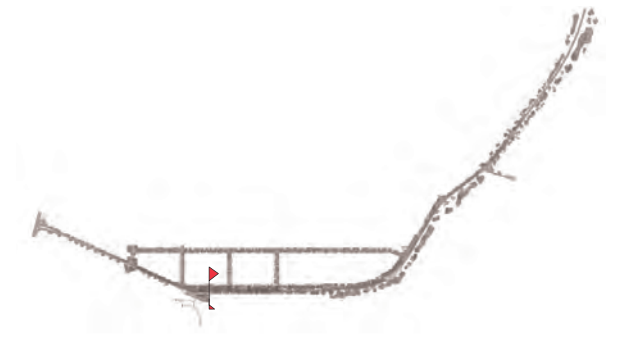
Street trees on both sides of the street provide shade with shade structures, seating, improved pedestrian footpaths, upgraded median and Jubilee Park with a boardwalk providing access to the river





**Section A - Sholl Street**





Section B - Roe Street



A photograph of a rocky hillside. The terrain is covered with patches of green grass and low-lying shrubs. Large, reddish-brown rocks are scattered across the slope, some forming a more continuous line. The lighting suggests a bright day, with shadows cast by the rocks and vegetation.

## Chapter 03

### Streetscape Option Three

# 03



# Concept Design Option Three (Freedom from Main Roads Constraints)



**Option Three is based on the design opportunities created through the removal of heavy vehicle traffic through town, by the construction of a ring road to the south. The removal of the Main Roads heavy vehicle requirements and constraints allows for greater freedom to implement the design opportunities identified during the community consultation, Site Analysis and Condition report, City requirements and input stage. Enabling the design to create a visually appealing place to move through, visit and live. Building on Option Two, the removal of the 15m wide freight access route will enable the space to be used to create a unique design that is not dictated by the civil geometry, but is based on cultural and community requirements. To increase the identity and liveability of the town, creating a streetscape, town centre and larger landscape that truly reflects the unique qualities of Yirramagardu.**

## Concept Design Option Three :

1. Streetscape improvements to Roe Street including total road redesign, with a raised section through the town center, new parking and kerb arrangement. The retention of existing mature trees supplemented with new street tree and low shrub/ground cover planting, new seating and shade structures, defined crossing points, upgrades to key intersections, artwork and open space to median.
2. Streetscape improvement to Sholl, Wellard and Padbury streets, including road narrowing through widening of the verges to accommodate gathering spaces, street tree and low shrub/ground cover planting. The inclusion of seating, shade and defined crossing points.
3. Creation of meeting and gathering spaces throughout the town integrated into the streetscape at appropriate locations.
4. Inclusion of language, stories and histories, through art, interpretation information, plant species and materials.
5. Complex earth mounding arrangements with planting and other natural features for shading and seating to the eastern portion of North West Coastal Highway. To assist in the identification of the town and provide a change in landscape typology within the town extents.
6. Proposed Yirramagardu Entrance signs at key approach locations.
7. Upgrade and revitalization of Jubilee Park. To include the relocation of the war memorials from the central median in Roe Street into Jubilee Park. Upgrade to existing toilets, new seating shade, planting and stronger connections to the Ngurin River and town center.
8. Relocation of town information bay to parking area adjacent Jubilee Park. Formalization of parking area to include parking provision for buses/coaches and caravans. Possible provision for caravan/motor home toilet dump point.
9. Boardwalk connection from Jubilee Park to the Ngurin River, incorporating interpretation information. Providing access to the Ngurin River at multiple locations, strengthening the community's connections to the river. With the possibility of creating a Lower Ngurin Dam to provide year round water in the section of river adjacent to town center and to control flooding. (Future separate work item and cultural approval required)
10. Acknowledgment of the Old Reserve with improved connections to the town.
11. Introduction of reticulation to key areas to assist establishment and ongoing maintenance.
12. Upgrade and formalise all pedestrian crossings be compliant to Australian Standards. All main crossings to be raised Wombat Crossings. Incorporate median breaks, line marking, lighting and signs to improve driver awareness and pedestrian safety.
13. Speed reduction interventions through reduction in speed limits, narrowing of road lanes and intersections, line marking, improved signs and radar speed signs.



# Streetscape Option Three Masterplan

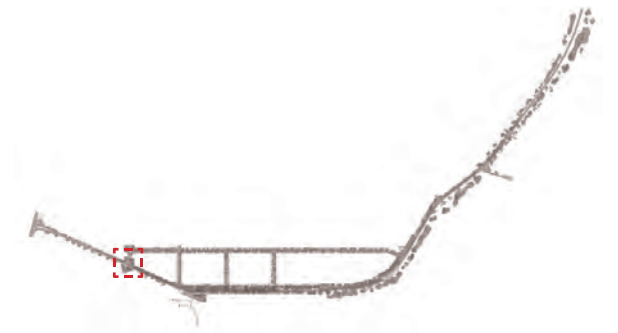






#### LEGEND

- 1 Concrete Footpath
- 2 Crossing at Grade
- 3 Low Shrub Planting with Local Boulders
- 4 Median Low Shrub Planting
- 5 Turf
- 6 Trees
- 7 Compacted Gravel



Roe Street and Queen Street / De Grey Street intersection  
Proposed footpaths, planting frames and provide better access to the bush tucker trail



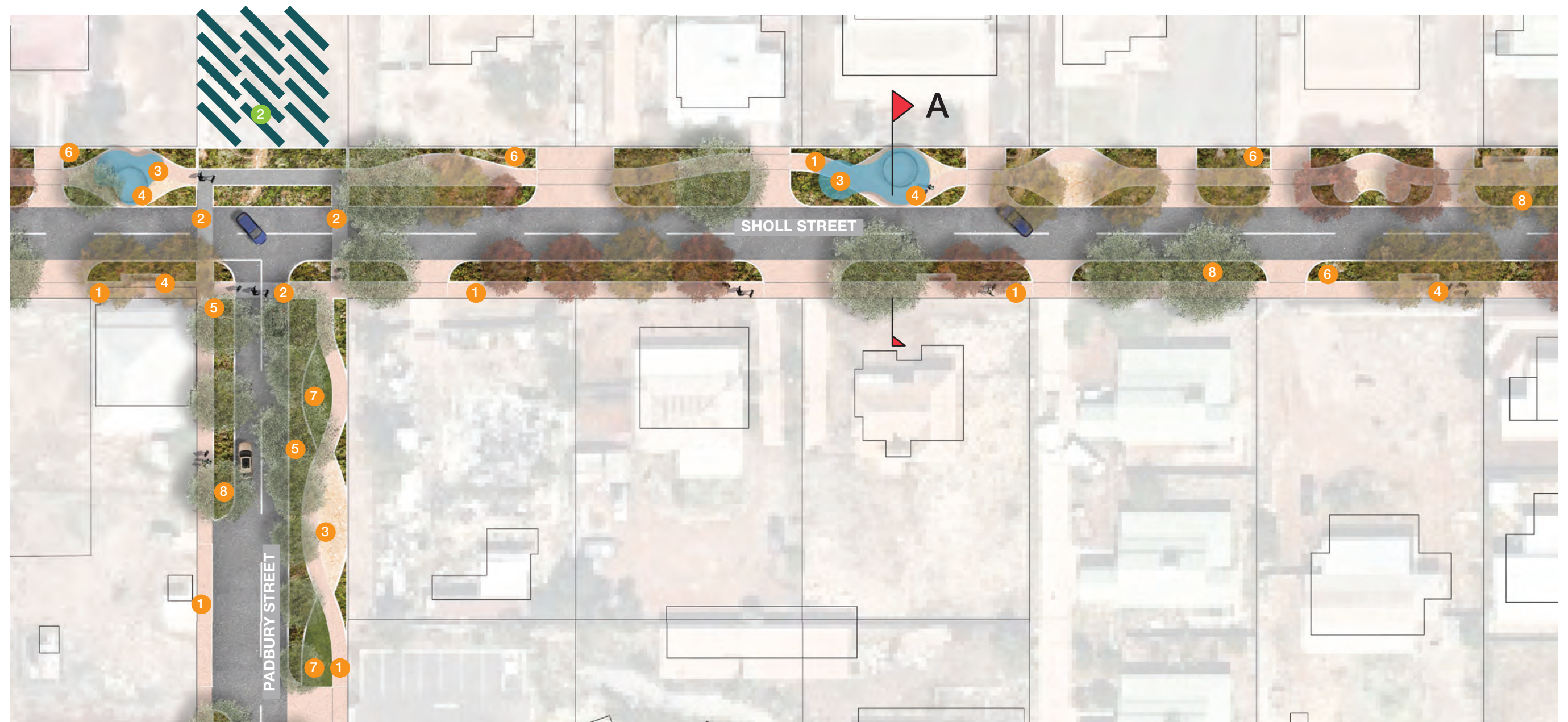
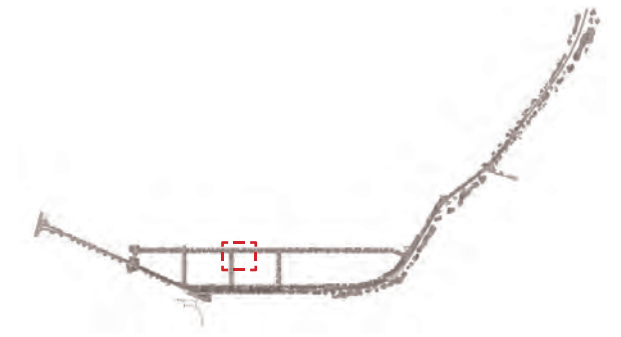


# LEGEND

- 1 Concrete Footpath
- 2 Crossing at Grade
- 3 Shade Structure
- 4 Seating / Communal Seating
- 5 Bin
- 6 Low Shrub Planting with Local Boulders
- 7 Turf
- 8 Trees

## FUTURE / SEPARATE WORK ITEMS

- 1 Boardwalk
- 2 Community Garden Opportunity



Sholl Street and Padbury Street intersection

Widening of verges to narrow the roadway, incorporate gathering spaces, treet trees, planting, seating and shade to improve amenity





# LEGEND

- |  |                          |
|--|--------------------------|
| 1 Concrete Footpath                      | 10 Angled Parking Bays   |
| 2 Crossing Ramp                          | 11 DDA Parking Bays      |
| 3 Shade Structure                        | 12 Caravan Parking       |
| 4 Seating / Communal Seating             | 13 Car Park              |
| 5 Bin                                    | 14 Sculpture Garden      |
| 6 Low Shrub Planting with Local Boulders | 15 ANZAC Memorial        |
| 7 Turf                                   | 16 Existing Toilet Block |
| 8 Trees                                  |                          |
| 9 Compacted Gravel                       |                          |

## FUTURE / SEPARATE WORK ITEMS

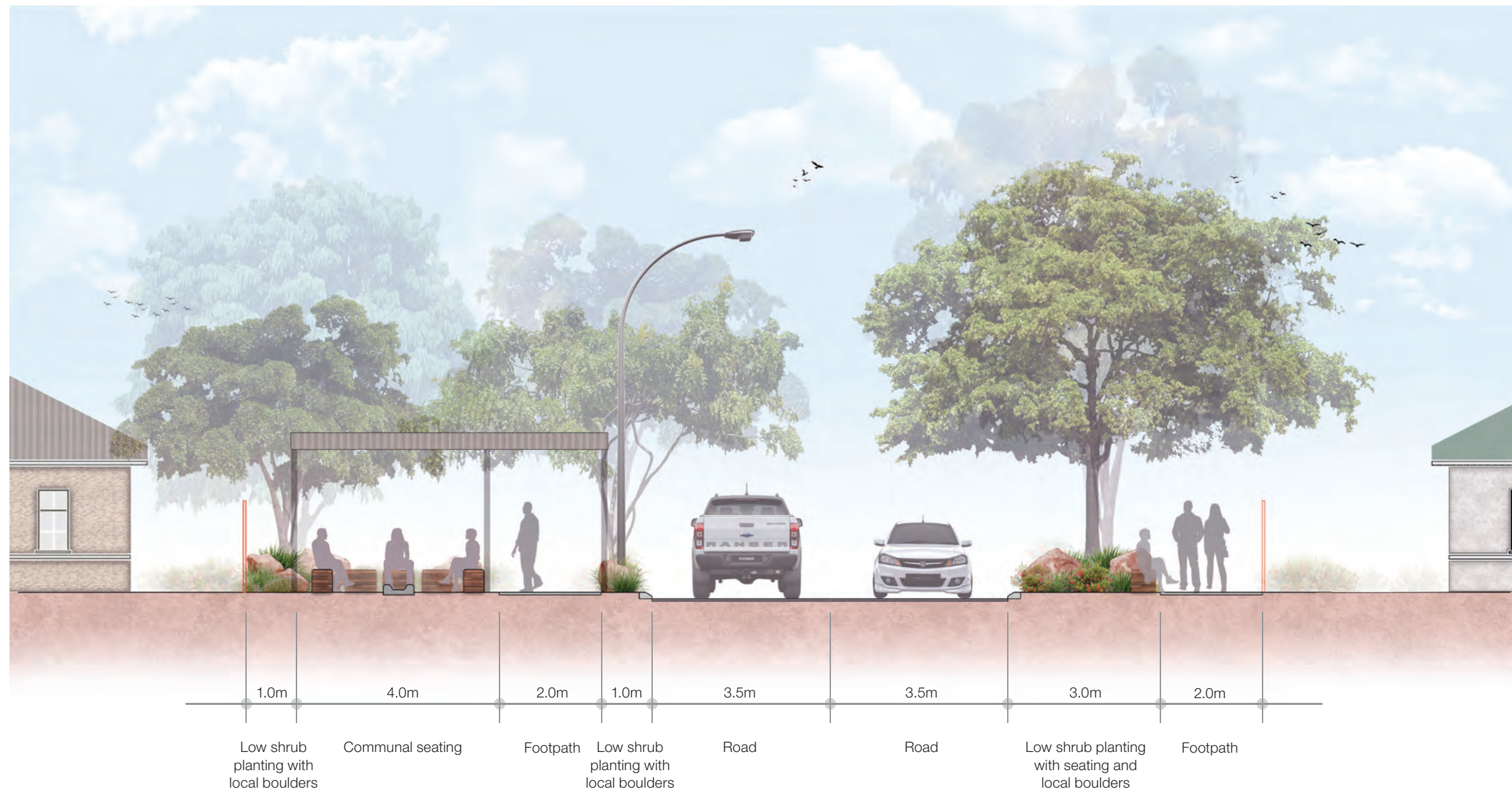
- |                                |
|--------------------------------|
| 1 Boardwalk                    |
| 2 Community Garden Opportunity |



Roe Street and Padbury Street intersection

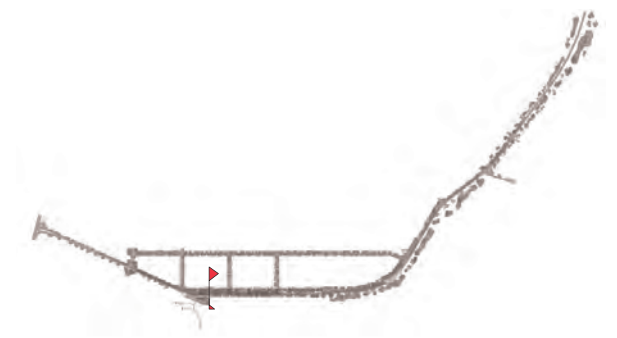
Redesigned roadway, parking with street trees on both sides of the street to provide shade with shade structures, seating, improved pedestrian footpaths, upgraded median with sculpture garden and Jubilee Park with relocated ANZAC Memorial and a boardwalk providing access to the river





Section A - Sholl Street





Section B - Roe Street









## Chapter 04

### Technical Information

# 04

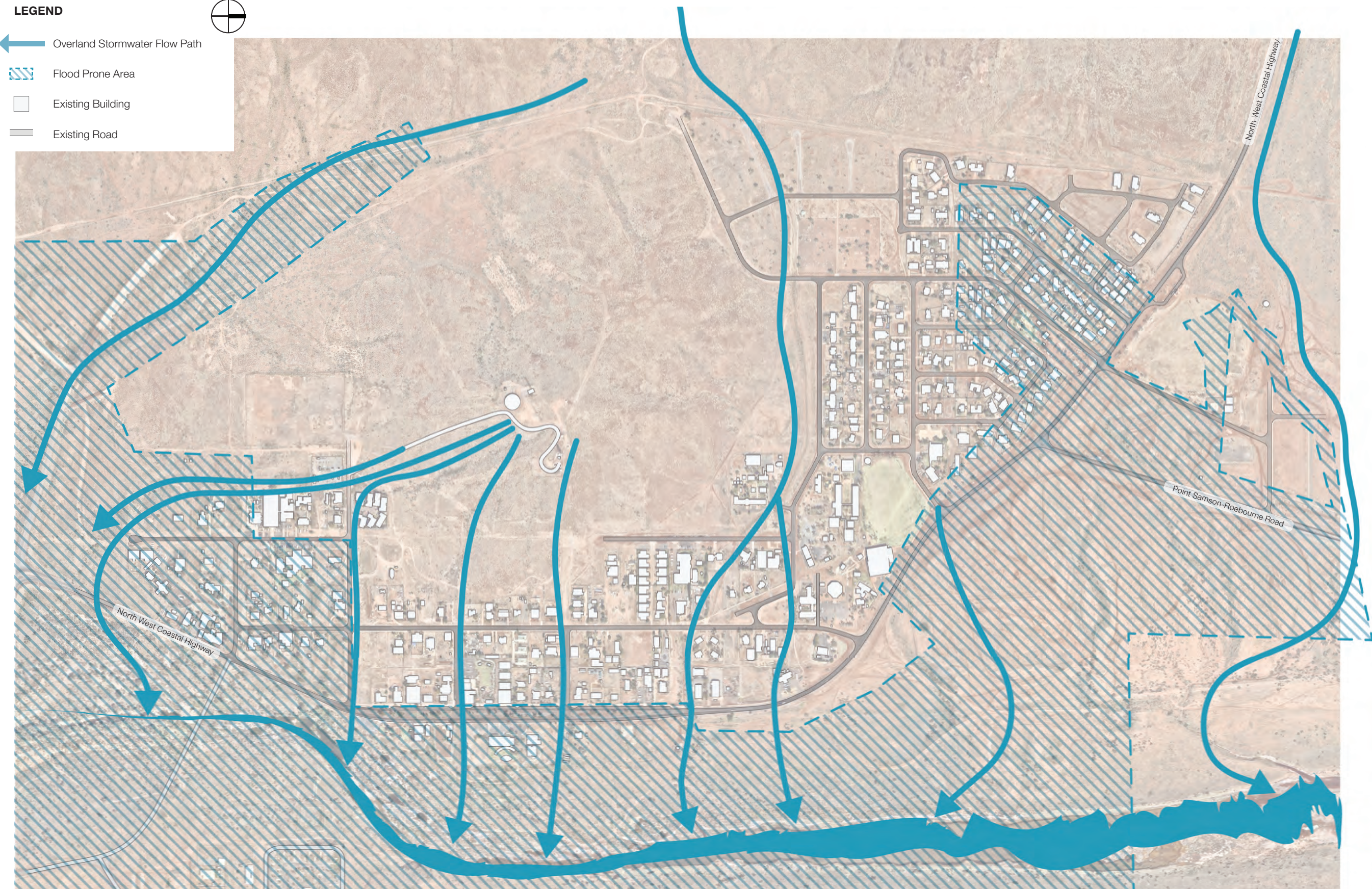


# 4.1 Utility Infrastructure





# 4.2 Stormwater Management





# 4.3 Site Amenities

LEGEND



- Option 1 Ammenities - Shade  
Structure and Seatings
- Option 2 Ammenities - Shade  
Structure and Seatings
- Option 3 Ammenities - Shade  
Structure, Seatings and Equipments
- Green Space
- Existing Road
- Water Pipeline

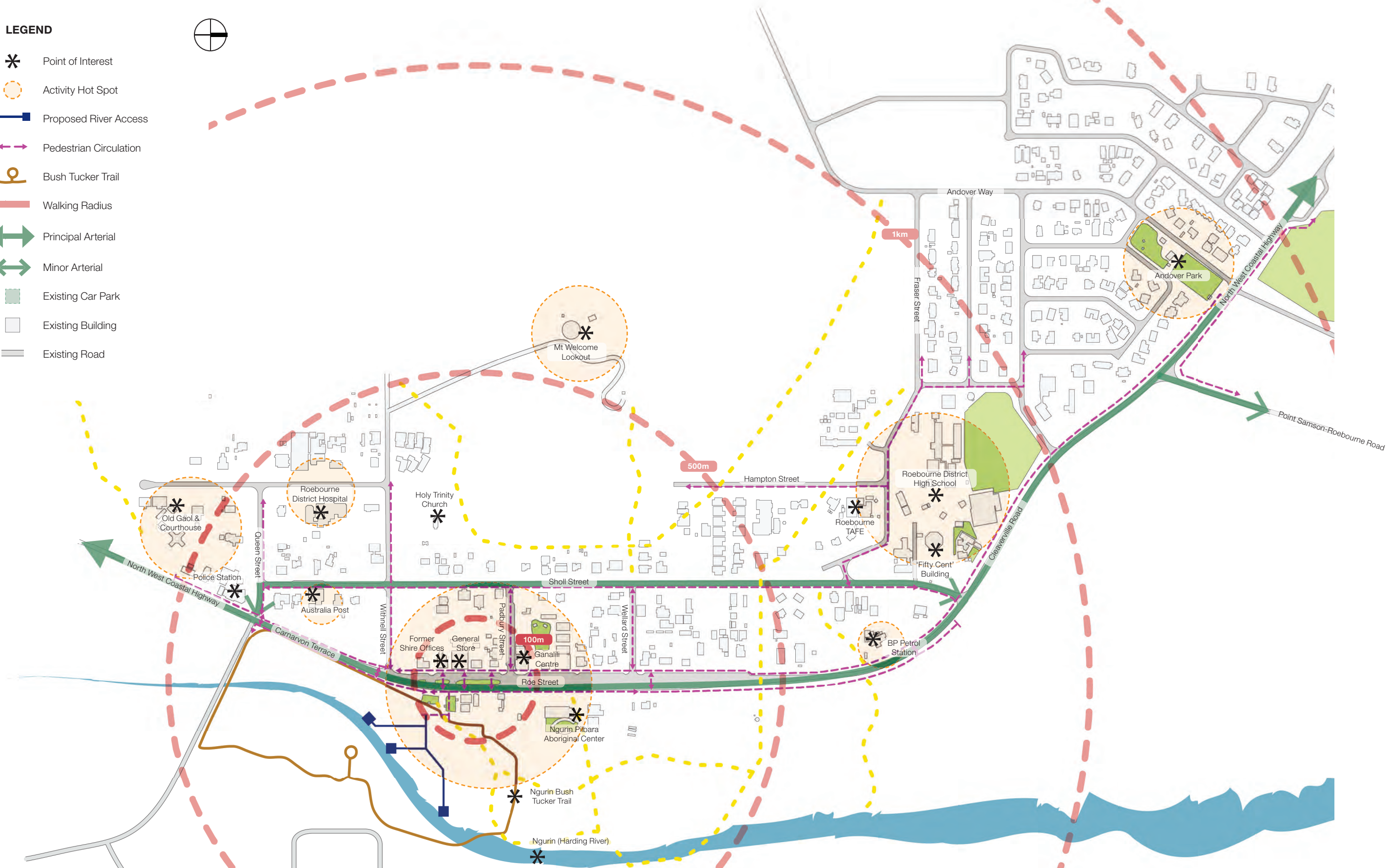




# 4.4 Pedestrian & Vehicle Accessibility

LEGEND

- \* Point of Interest
- Activity Hot Spot
- ➡ Proposed River Access
- ➡ Pedestrian Circulation
- 🚶 Bush Tucker Trail
- Walking Radius
- ↔ Principal Arterial
- ↔ Minor Arterial
- █ Existing Car Park
- ▭ Existing Building
- Existing Road





## 4.5 River Access



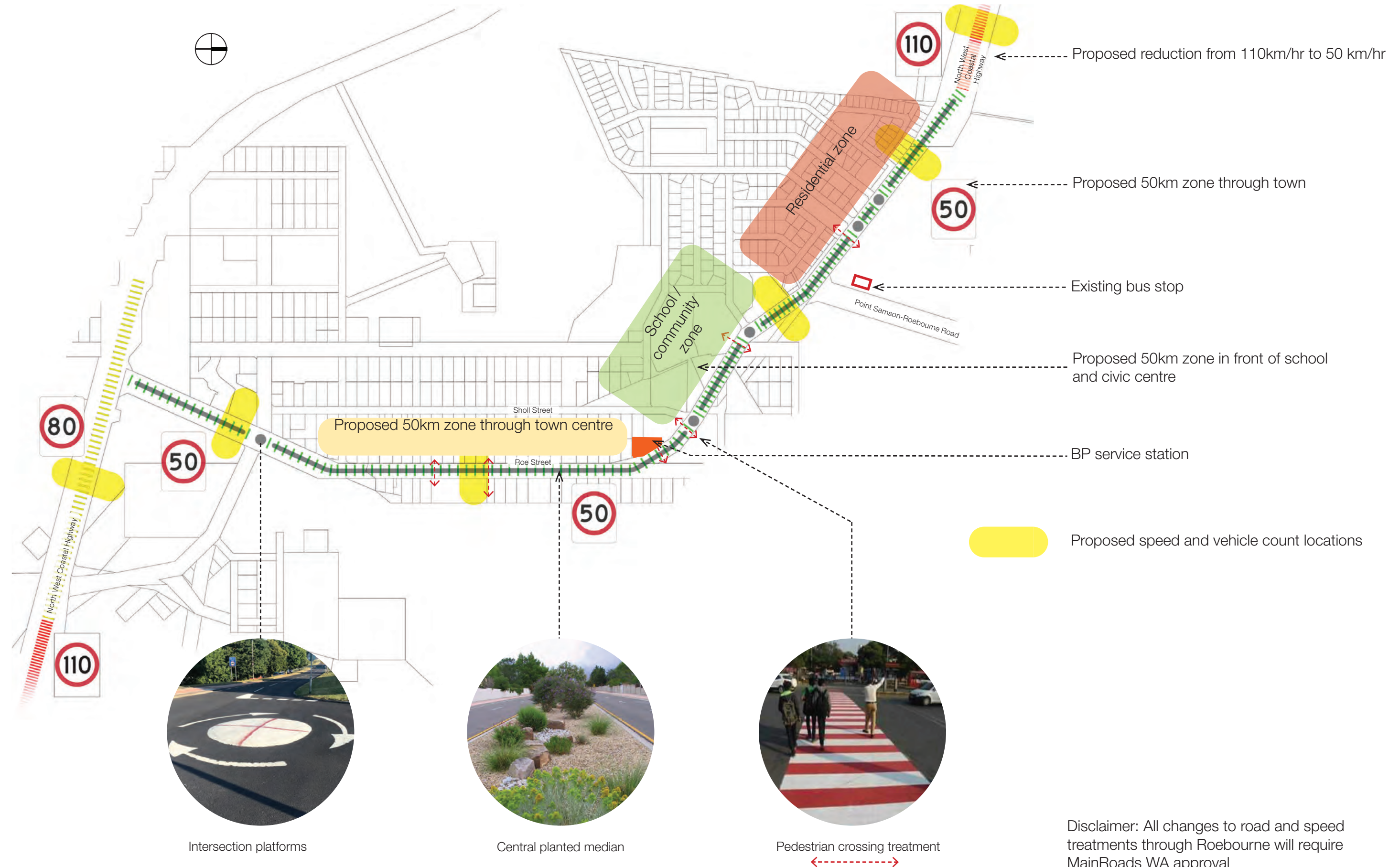


# 4.6 River Dam





## 4.7 Traffic Speed Mitigations for Option One and Two Only





# 4.8 Entrance Signs



30m high town entrance signs with its traditional name. Placed along entries to the Town from North West Coastal Highway and Point Samson-Roebourne Road



Alternative colour option











## Chapter 05

### Furniture and Material Specification

# 05



## 5.1 Materials

**The projects materiality is based on key streetscape design principles and draws from the surrounding landscape and the town's rich history and culture.**

The streetscape design will aim to establish a place of character and identity that is people oriented, with an abundance of shade and green spaces. Interventions will be sensitively integrated with the existing built form, and will consider services and vehicle requirements, whilst fostering a safe and comfortable experience at the pedestrian level.

The selection of materials and furniture is based on these main factors:

- Create flexible and multi-use spaces to support street activation, events, and gatherings
- Introduce tree and plant species to help establish a sense of place and create a shady liveable town
- Cohesive and consistent selection of streetscape materials and finishes
- Selected materials and a rich colour palette reinforce the character of the town and region
- Urban lighting strategies for night-time vibrancy and activation.
- Acknowledge and complement the Town Centre's distinct character and identity through the materials and finishes selection



Reinforce the pedestrian zone with improved amenity



Multi-use and flexible spaces to accommodate events and encourage activation



Integrated interpretative and artistic elements



## 5.2 Furniture Selections



Stone plinths for seating



Timber seats for town centre



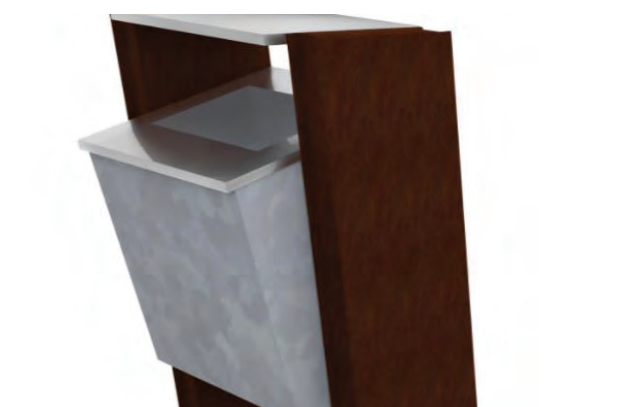
Timber seats on top of local stone plinths



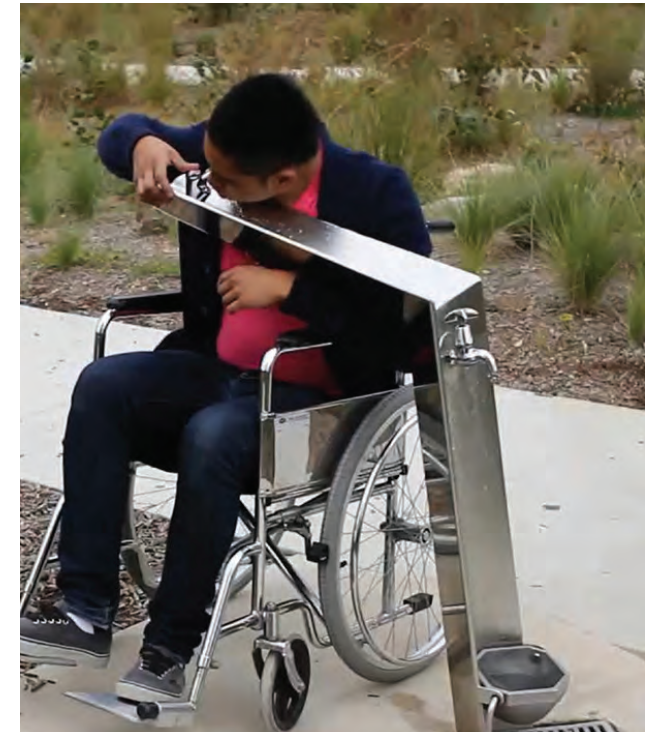
Bike racks



Timber seating platforms



Rubbish Bins



Accessible drinking fountain with dog bowl

The furniture palette has been selected to provide a diverse range of seating and gathering opportunities. From formal seating to informal cut local stone and timber platforms, the range of seat types are selected to tie into the diversity of gathering spaces that have been designed into the three options.

Other selections principles are listed below:

- Visually appealing and comfortable with materials that can accommodate the climate and are inviting to use
- Durable and long lasting, to minimise maintenance
- Locally/Australian sourced or manufactured for ease of sourcing spare parts, replacement and additional units if required.
- Represent local geology and land forms
- Enable art and interpretation integration
- Simply installed to allow for relocation, removal and rearrangement as required to suit the use patterns and changing needs of the community



## 5.3 Pavement and Hardscape Selections



Primary Footpath Material - Grey Concrete



Town Centre Road Pavement - Red Bitumen (Option Three)



Local feature boulders



Feature exposed aggregate concrete using local gravel - Town Centre



Gabion walls with local stone



Cut feature stone in town centre



Feature interpretation pavement



Integration of art, stories and interpretation into pavement



Informal pavement - crushed Wickham gravel

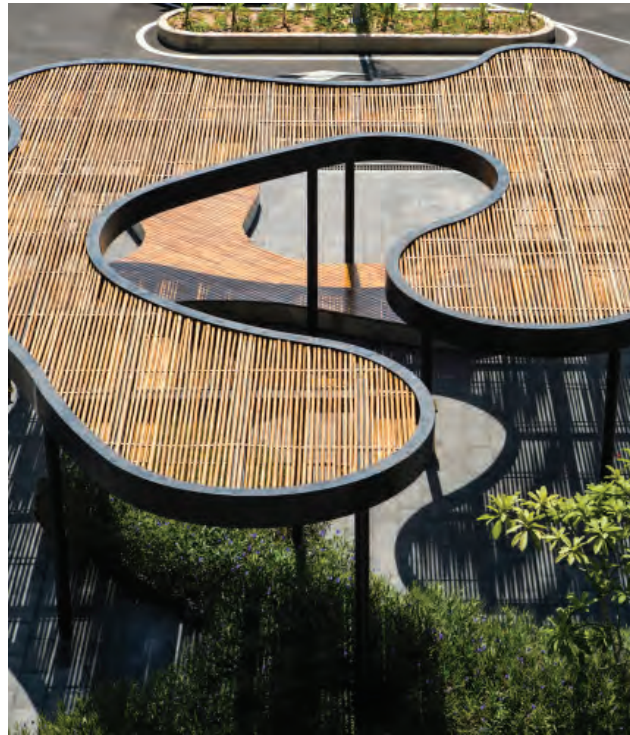
Pavement and hardscape materials have been selected to reflect the landscape character of the town and its surrounds. To help create a streetscape, town centre and larger landscape that truly reflects the unique qualities of Yirramagardu.

Selection principles are listed below:

- Cohesive and consistent selection of streetscape materials and finishes.
- Acknowledge and complement the Town Centre's distinct character and identity through the materials and finishes selection.
- Visually appealing and comfortable.
- Flexible palette to enable on-site adaptability for future changes and ease of use for long term maintenance.
- Represent local geology and landforms
- Enable art and interpretation integration



## 5.4 Shade Structures



Shade structure integrated with seating and softscape elements



Integrated artwork that celebrates the locale through colour and texture



Dynamic experiences created through integrated design



Alternative shade and art opportunities

Shade is critical in creating a liveable town and providing spaces for visitors and the community to gather. Trees will provide shade throughout the town and shade structures will provide shade at key gathering spaces.

The proposed shade structure will also:

- Acknowledge and complement the Town Centre's distinct character and identity through the materials and finishes selection
- Create flexible and multi-use spaces to support street activation, events, and gatherings
- Allow for local stories, culture and interpretation opportunities
- Provide instant shade while new trees become established



## 5.5 Art Opportunities



To reflect and express the local landscape



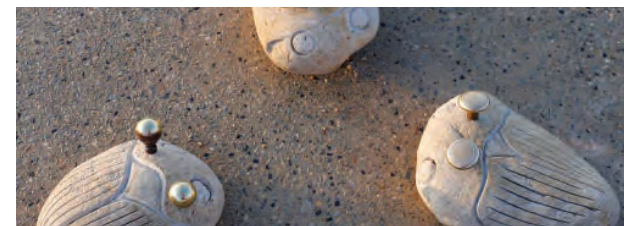
Interactive tactile artworks



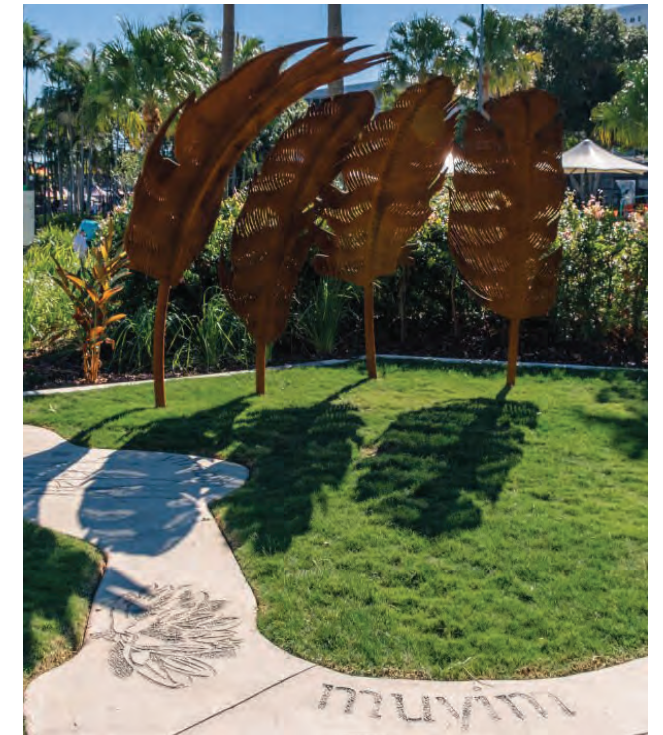
Large scale artworks for awe and wonder



Murals and painted artwork to buildings and pavement



Smaller scaled artwork to discover and delight



Stories, narratives and language celebrated and expressed

Artwork is an integral activation and place making element to all options and there are numerous opportunities for the integration of art into the streetscape.

Artwork is to be developed in collaboration with the local community to ensure the towns stories, history and narrative is expressed.

With the towns respected existing art practices there is scope to incorporate the new proposals as part of larger external events, workshops and artist in residence programs.

Due to the size the streetscape in all options there is opportunities for it to become a performance space/s for the performing arts and community events. This could tie into the ongoing programs/work under taken by organisations like Big Hart.

In option three we propose to use the expansive median in Roe Street as a out door gallery space to showcase

locally designed sculptural works. It is envisioned that this could be curated locally with works and exhibitions changing biannually or quarterly. Opening up opportunities to create connections with adjacent exhibitions such as the Cossack Art Awards



## 5.6 Interpretation Opportunities



Local stories, events and characters celebrated through artworks



Expression of language and country



Interpretation information integrated into walls, seating, shade shelters



Celebration and expression of place integrated in streetscape



Memorial and remembrance



Local narratives and history

Integration and the inclusion of interpretation information is an important component to all 3 design options. To tell the stories, events, histories, celebrate the local characters, express languages and Country. This combined with the artwork will be the main form of communication of the towns identity and its place in the Pilbara and Western Australia.

As the concept design is refined through the next 2 stages of the project, interpretation opportunities can be identified and developed with the community. We would recommend that this work be done in tandem with the implementation of the project to ensure coordination with the streetscape design.

We recommend that a specialist interpretation consultant be brought into the project to work with the community, local groups and the city to develop a strategy for the ongoing implementation of interpretation information.

The following has already been raised through conversations with the community. We have recognised

this will continue to include these as the designs are developed in greater detail.

- Pansy Hick's art – 'Stepping Stones' along the footpath to the shop/café.
- Embed the animals that the children have created for the Ganallii Centre in the footpath, featuring their language names and english names.
- Understanding the cultural differences between the language groups and how this can be represented in the Town
- Recognise the original general store, the bakery and any associated stories



## 5.7 Tree Selections

We have looked to include both endemic and non endemic tree species into the design to ensure a balanced outcome is achieved that provides an increase in shade and cultural trees throughout the town.

The selected trees have been selected to provide the below :

- Cultural uses and references
- The ability to provide shade, survive and thrive in the Pilbara
- Provide colour and seasonal interest

We will continue to take on board the communities comments and include the below requests as we develop the designs:

- Plant frangipani's, kurrajongs, myringas (type of boab), jacarandas, golden shower trees and poincianas up the main street – for colour.
- Have a place where we plant one tree of importance from each of the main language groups. 1 x tree for Ngarluma, 1 x tree for Yindjibarndi, 1 x tree for Banyjima. The Yindjibarndi tree could be a 'Majgan' tree (Snappy Gum/Eucalyptus Leucophloia). Yindjibarndi people eat the flowers of this tree and spit out the seeds.



*Delonix regia* - Royal Poinciana



*Eucalyptus Leucophloea* - Snappy Gum



*Melaleuca leucadendra* - Weeping Paperbark



*Plumeria Obtusa* - Frangipani tree



*Peltophorum pterocarpum* - Yellow Jacaranda



*Acacia xiphophylla* - Snakewood (Majgan tree)



*Albizia saman* - Rain tree



## 5.8 Vegetation Selection



*Swainsonia Formosa* – Sturt desert pea



*Ptilotus exaltatus* – Pink Mulla Mulla



Contrasting mix of exotic and local plant species



*Cassia oligophylla*



*Bougainvillea Glabra nana* – dwarf



*Lomandra Nyalla*



Mulla mulla, Eremophila and grasses



*Triodia lanigera*

The above species are a snap shot of the variety of species that will be included in the final designs. We have selected a variety of both endemic Pilbara species, Western Australian and Australian native species to ensure the final design outcome is lush, vibrant and represents the local landscape. The non Pilbara species will be checked to ensure they are suitable for the climate and environment and will survive and thrive. A full plant species list will be developed during the next stages of the project.







## Chapter 06

### Opinion of Probable Cost

06



## 6.1 Opinion of Probable Cost



THIS PAGE HAS BEEN LEFT BLANK INTENTIONALLY







A thick, solid green diagonal stripe runs from the top-left corner towards the bottom-left corner, leaving a white triangular area on the right side of the slide.

# Appendices







A thick green diagonal bar runs from the top-left corner towards the bottom-right, covering the left half of the page.

## **Appendix A - Concept Design Option One**

# **A**







A thick, solid green diagonal stripe runs from the top-left corner towards the bottom-left corner, leaving a white triangular area in the top-left.

## **Appendix B - Concept Design Option Two**

# **B**







A thick green diagonal bar runs from the top-left corner towards the bottom-left corner, leaving a white triangular area in the top-left.

## **Appendix C - Concept Design Option Three**

**C**







**GHDWoodhead Pty Ltd**

This report has been prepared by GHDWoodhead for the Client and may only be used and relied on by the Client for the purpose agreed between GHDWoodhead and the Client as set out in this report.

GHDWoodhead otherwise disclaims responsibility to any person other than the Client arising in connection with this report. GHDWoodhead also excludes implied warranties and conditions to extent legally permissible.

The services undertaken by GHDWoodhead in connection with preparing this report were limited to those specifically detailed in the report and are subject to the scope limitations set out in the report. The opinions, conclusions and any recommendations in this report are based on conditions encountered and information reviewed at the date of preparation of this report. GHDWoodhead has no responsibility or obligation to update this report to account for events occurring subsequent to the date that the report was prepared.

The opinions, conclusions and any recommendations in this report are based on the Client’s Brief. GHDWoodhead has prepared this report relying on information, provided to GHDWoodhead by the Client and by others, which GHDWoodhead has not independently verified or checked beyond the agreed scope of work. GHDWoodhead does not accept liability in connection with such unverified information, including errors and omissions in this report which were caused by errors or omissions in that information provided by the Client or others.



Perth  
Level 10  
999 Hay Street  
Perth, Western Australia  
6000

T: +61 8 6222 8222  
E: [perth@ghdwoodhead.com](mailto:perth@ghdwoodhead.com)

**GH**DWOODHEAD

[ghdwoodhead.com](http://ghdwoodhead.com)