
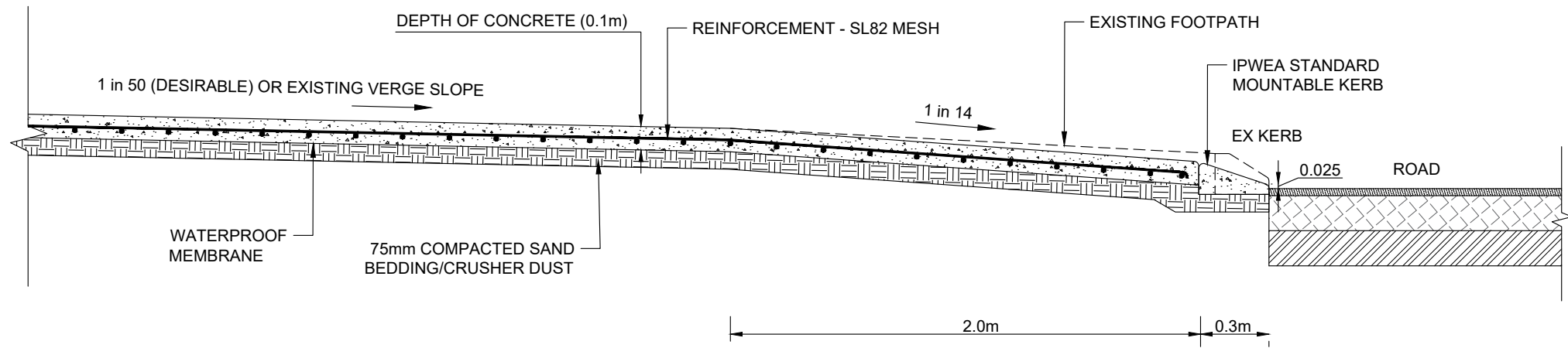


RESIDENTIAL AND COMMERCIAL CROSSOVER STANDARD TYPICAL DRAWINGS

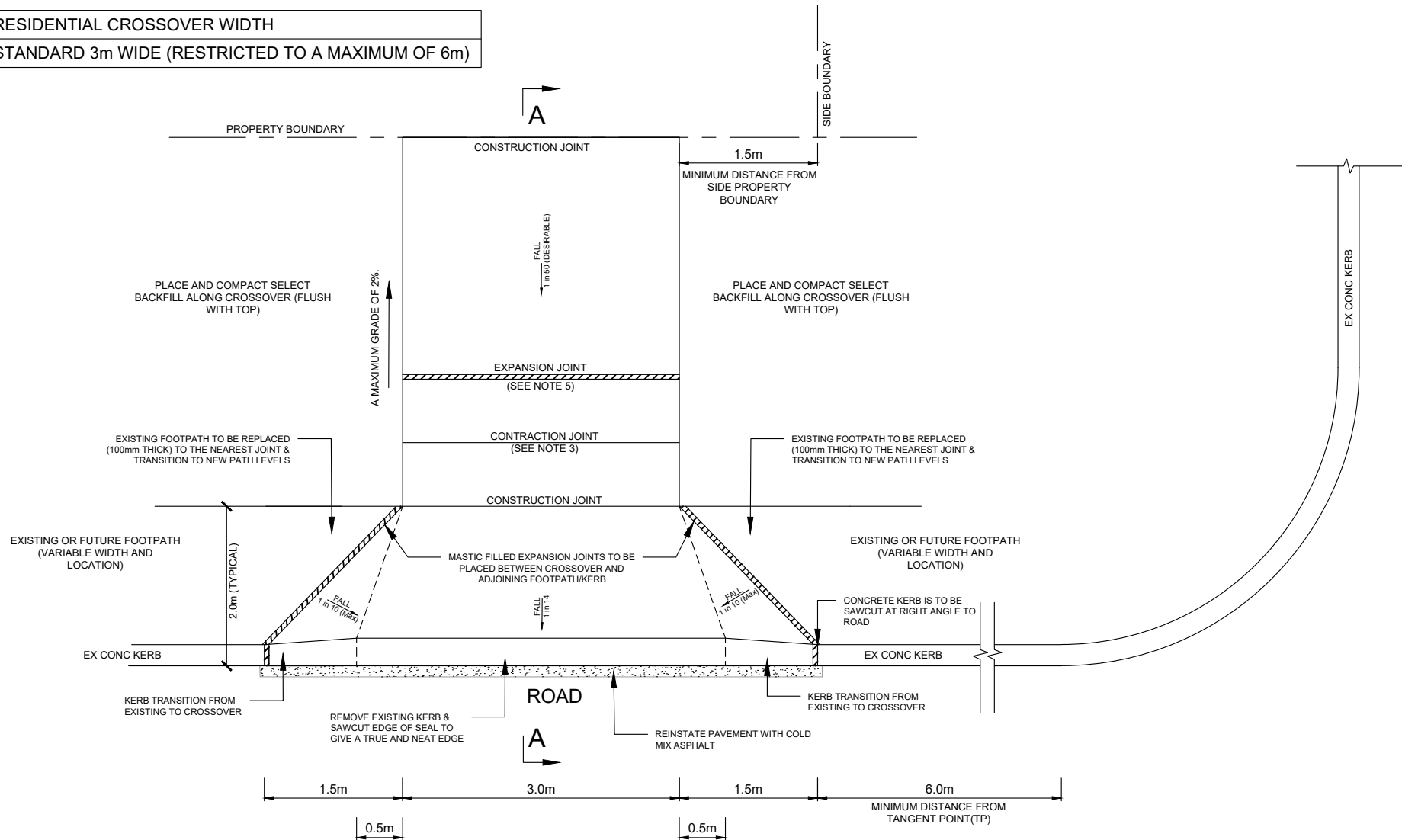
TECHNICAL SERVICES - DESIGN DRAWINGS

| | | | | | | | | | | | | | |
|-----|------------|-------|------|-------------------------|--|----------------|------------------|------------------|---|--------------|------------|----------|------|
| | | | | |  | PROJECT TITLE: | STANDARD DRAWING | SURVEY DATUM | <div>City of Karratha Lot 1083 Wellcome Road PO Box 219 - Karratha Western Australia 6714 Em:enquiries@karratha.wa.gov.au Ph: 08 9186 8555</div> <div>COPYRIGHT</div> <div>The concepts and information contained in this document are the Copyright of City of Karratha. Use or copying of the document in whole or part without written permission of City of Karratha constitutes and infringement of copyright.</div> | DRAWN BY: | IS | SCALE: | SHT: |
| | | | | | | DRAWING TITLE: | COVER PAGE | HORIZONTAL DATUM | | DESIGNED BY: | IS | N.T.S | A3 |
| | | | | | | | | VERTICAL DATUM | | CHECKED BY: | DPS | DRG. NO: | REV: |
| C | 01/07/2024 | IS | DPS | SECOND AMENDMENT | | | | MAP PROJECTION | | APPROVED BY: | DPS | - | C |
| B | 17/10/2019 | PH | PH | FIRST AMENDMENT | | | | | | DATE: | 01/07/2024 | | |
| A | 15/12/2016 | PH | PH | ORIGINAL ISSUE | | | | | | | | | |
| REV | ISSUE DATE | DRAWN | CHK. | ISSUED FOR OR AMENDMENT | | | | | | | | | |



SECTION A-A
SCALE 1:25

RESIDENTIAL CROSSOVER WIDTH
STANDARD 3m WIDE (RESTRICTED TO A MAXIMUM OF 6m)



PLAN
NOT TO SCALE

GENERAL NOTES

- CROSSOVER CONCRETE SLAB TO BE 100mm THICK WITH SL82 MESH REINFORCEMENT PLACED CENTRALLY ON A 75mm COMPACTED SAND BEDDING/CRUSHER DUST WITH A WATERPROOF MEMBRANE.
- CONCRETE KERBING SHALL BE REMOVED AND THE EDGE OF SEAL SAW-CUT TO GIVE A TRUE AND NEAT EDGE.
- CONTRACTION JOINTS SHALL BE 20mm DEEP AND 5mm WIDE AND FORMED WITH A CUTTING TOOL AT 3m INTERVALS.
- CONCRETE SHALL HAVE A MINIMUM COMPRESSIVE STRENGTH OF 32MPa AT 28 DAYS.
- IF THE CROSSOVER IS 12m OR OVER IN LENGTH THEN AN EXPANSION JOINT IS REQUIRED AT 6m INTERVALS. EXPANSION JOINT TO BE 15mm WIDE AND FILLED WITH BITUMINOUS IMPREGNATED PARTICLE BOARD STRIP OR OTHER APPROVED MATERIAL EXTENDING FOR THE FULL WIDTH AND DEPTH OF THE CONCRETE. THE FILLER SHALL BE PLACED PRIOR TO CONCRETE BEING POURED.
- THE MAXIMUM GRADE FOR THE VERGE TO BE 2%.
- CONCRETE SHALL HAVE A BROOMED FINISH.

| REV | ISSUE DATE | DRAWN | CHK. | ISSUED FOR OR AMENDMENT |
|-----|------------|-------|------|-------------------------|
| C | 01/07/2024 | IS | DPS | SECOND AMENDMENT |
| B | 17/10/2019 | PH | PH | FIRST AMENDMENT |
| A | 15/12/2016 | PH | PH | ORIGINAL ISSUE |



| | |
|----------------|--|
| PROJECT TITLE: | STANDARD DRAWING |
| DRAWING TITLE: | STANDARD RESIDENTIAL CONCRETE CROSSOVER FOOTPATH BEHIND KERB |

| | |
|------------------|--|
| SURVEY DATUM | City of Karratha Lot 1083 Welcome Road PO Box 219 - Karratha Western Australia 6714 Em:enquiries@karratha.wa.gov.au Ph: 08 9186 8555 |
| HORIZONTAL DATUM | |
| VERTICAL DATUM | COPYRIGHT |
| MAP PROJECTION | The concepts and information contained in this document are the Copyright of City of Karratha. Use or copying of the document in whole or part without written permission of City of Karratha constitutes and infringement of copyright. |

| | | | | | |
|--------------|------------|----------|------------|------|----|
| DRAWN BY: | IS | SCALE: | AS SHOWN | SHT: | A3 |
| DESIGNED BY: | IS | DRG. NO: | E-2016-012 | REV: | C |
| CHECKED BY: | DPS | | | | |
| APPROVED BY: | DPS | | | | |
| DATE: | 01/07/2024 | | | | |



MINIMUM Crossover WIDTH
3m WIDE (RESTRICTED TO A MAXIMUM OF 6m)

Labels and Dimensions:

- PROPERTY BOUNDARY:** Indicated by a horizontal line with a 0.5m offset.
- MINIMUM DISTANCE FROM SIDE PROPERTY BOUNDARY:** 1.5m.
- CONSTRUCTION JOINT:** Indicated by vertical dashed lines.
- EXPANSION JOINT:** Indicated by a horizontal dashed line.
- CONTRACTION JOINT:** Indicated by a horizontal solid line.
- EXISTING OR FUTURE FOOTPATH (VARIABLE WIDTH AND LOCATION):** Indicated by horizontal lines on either side.
- EXISTING FOOTPATH TO BE REPLACED (100mm THICK) TO THE NEAREST JOINT & TRANSITION TO NEW PATH LEVELS:** Indicated by arrows pointing to the footpaths.
- PLACE AND COMPACT SELECT BACKFILL ALONG CROSSOVER (FLUSH WITH TOP):** Indicated by arrows pointing to the backfill areas.
- EX CONC KERB:** Indicated by a horizontal line at the bottom.
- KERB TRANSITION FROM EXISTING TO CROSSOVER:** Indicated by arrows pointing to the kerb transitions.
- REMOVE EXISTING KERB & SAWCUT EDGE OF SEAL TO GIVE A TRUE AND NEAT EDGE:** Indicated by an arrow pointing to the kerb edge.
- REINSTATE PAVEMENT WITH COLD MIX ASPHALT:** Indicated by an arrow pointing to the pavement area.
- CONCRETE KERB IS TO BE SAWCUT AT RIGHT ANGLE TO ROAD:** Indicated by an arrow pointing to the concrete kerb.
- MINIMUM DISTANCE FROM TANGENT POINT (TP):** 6.0m.
- Dimensions:** 1.5m, 3.0m, 0.5m, 1.5m, 6.0m.
- Fall:** FALL 1 in 20 (DESIRABLE), FALL 1 in 10 (MAX), FALL 1 in 14.
- Grade:** A MAXIMUM GRADE OF 2%.
- Orientation:** A

1. CROSSOVER CONCRETE SLAB TO BE 100mm THICK WITH SL82 MESH REINFORCEMENT PLACED CENTRALLY ON A 75mm COMPACTED SAND BEDDING/CRUSHER DUST WITH A WATERPROOF MEMBRANE.
2. CONCRETE KERBING SHALL BE REMOVED AND THE EDGE OF SEAL SAW-CUT TO GIVE A TRUE AND NEAT EDGE.
3. CONTRACTION JOINTS SHALL BE 20MM DEEP AND 5MM WIDE AND FORMED WITH A CUTTING TOOL AT 3m INTERVALS.
4. CONCRETE SHALL HAVE A MINIMUM COMPRESSIVE STRENGTH OF 32MPa AT 28 DAYS.
5. IF THE CROSSOVER IS 12m OR OVER IN LENGTH THEN AN EXPANSION JOINT IS REQUIRED AT 6m INTERVALS. EXPANSION JOINT TO BE 15mm WIDE AND FILLED WITH BITUMINOUS IMPREGNATED PARTICLE BOARD STRIP OR OTHER APPROVED MATERIAL EXTENDING FOR THE FULL WIDTH AND DEPTH OF THE CONCRETE. THE FILLER SHALL BE PLACED PRIOR TO CONCRETE BEING POURED.
6. THE MAXIMUM GRADE FOR THE VERGE TO BE 2%.
7. CONCRETE SHALL HAVE A BROOMED FINISH.

PLAN
NOT TO SCALE

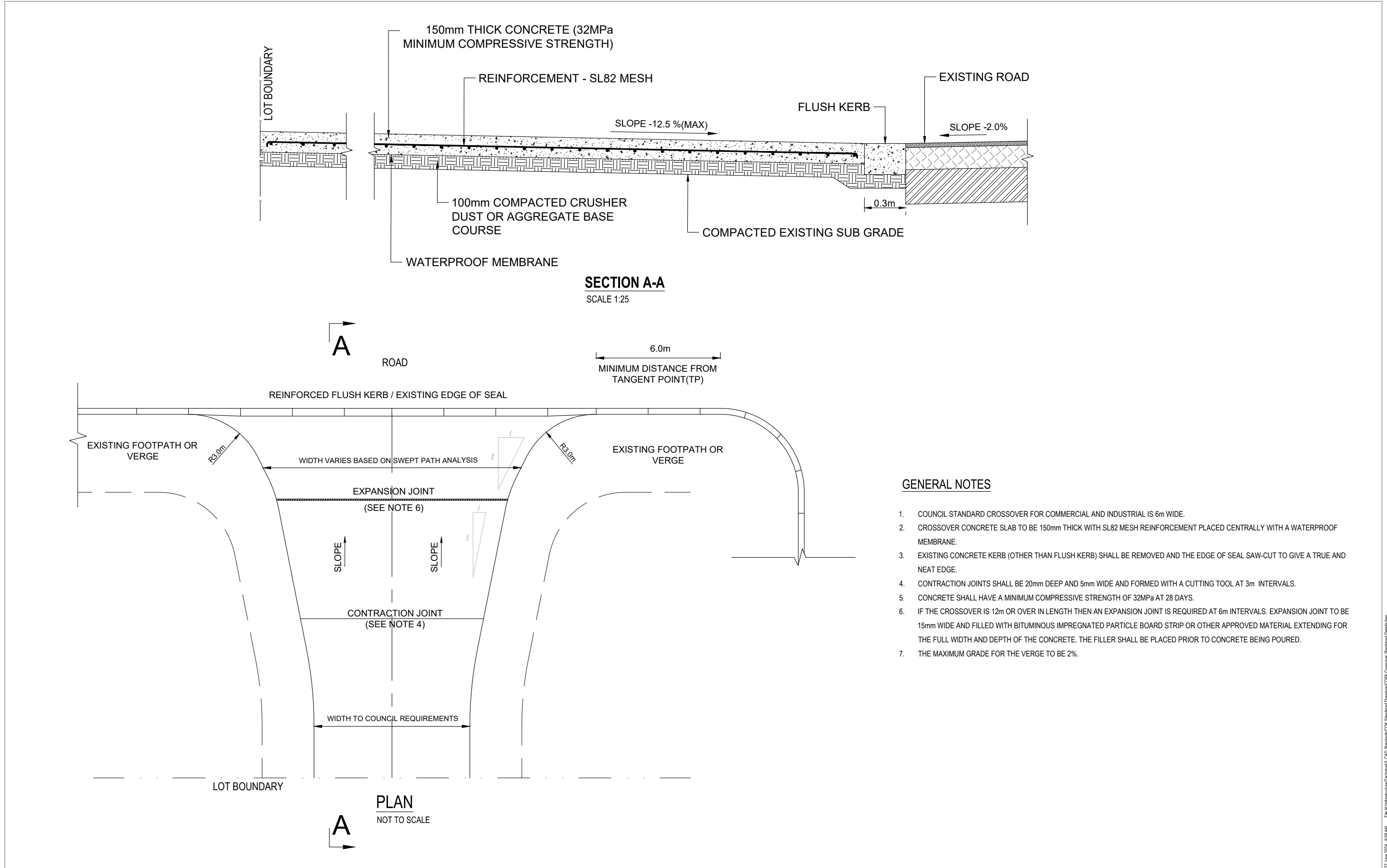
| | | | | |
|-----|------------|-------|------|-------------------------|
| | | | | |
| | | | | |
| C | 01/07/2024 | IS | DPS | SECOND AMENDMENT |
| B | 17/10/2019 | PH | PH | FIRST AMENDMENT |
| A | 15/12/2016 | PH | PH | ORIGINAL ISSUE |
| REV | ISSUE DATE | DRAWN | CHK. | ISSUED FOR OR AMENDMENT |



| | |
|---|--|
| PROJECT TITLE: STANDARD DRAWING | |
| DRAWING TITLE: STANDARD RESIDENTIAL CONCRETE CROSSOVER FOOTPATH AT BOUNDARY | |

| | |
|------------------|---|
| SURVEY DATUM | City of Karratha |
| HORIZONTAL DATUM | Lot 1083 Welcome Road PO Box 219 - Karratha Western Australia 6714 Em:enquiries@karratha.wa.gov.au Ph: 08 9186 8555 |
| VERTICAL DATUM | COPYRIGHT |
| MAP PROJECTION | The concepts and information contained in this document are the Copyright of City of Karratha. Use or copying of the document in whole or part without written permission of City of Karratha constitutes and infringement of copyright. |

| | | | |
|--------------|------------|------------|------|
| DRAWN BY: | IS | SCALE: | SHT: |
| DESIGNED BY: | IS | | |
| CHECKED BY: | DPS | AS SHOWN | A3 |
| APPROVED BY: | DPS | | |
| DATE: | 01/07/2024 | | |
| | | DRG. NO: | REV: |
| | | E-2016-013 | C |



GENERAL NOTES

- 1. COUNCIL STANDARD CROSSOVER FOR COMMERCIAL AND INDUSTRIAL IS 6m WIDE.
- 2. CROSSOVER CONCRETE SLAB TO BE 150mm THICK WITH SL82 MESH REINFORCEMENT PLACED CENTRALLY WITH A WATERPROOF MEMBRANE.
- 3. EXISTING CONCRETE KERB (OTHER THAN FLUSH KERB) SHALL BE REMOVED AND THE EDGE OF SEAL SAW-CUT TO GIVE A TRUE AND NEAT EDGE.
- 4. CONTRACTION JOINTS SHALL BE 20mm DEEP AND 5mm WIDE AND FORMED WITH A CUTTING TOOL AT 3m INTERVALS.
- 5. CONCRETE SHALL HAVE A MINIMUM COMPRESSIVE STRENGTH OF 32MPa AT 28 DAYS.
- 6. IF THE CROSSOVER IS 12m OR OVER IN LENGTH THEN AN EXPANSION JOINT IS REQUIRED AT 6m INTERVALS. EXPANSION JOINT TO BE 15mm WIDE AND FILLED WITH BITUMINOUS IMPREGNATED PARTICLE BOARD STRIP OR OTHER APPROVED MATERIAL EXTENDING FOR THE FULL WIDTH AND DEPTH OF THE CONCRETE. THE FILLER SHALL BE PLACED PRIOR TO CONCRETE BEING POURED.
- 7. THE MAXIMUM GRADE FOR THE VERGE TO BE 2%.

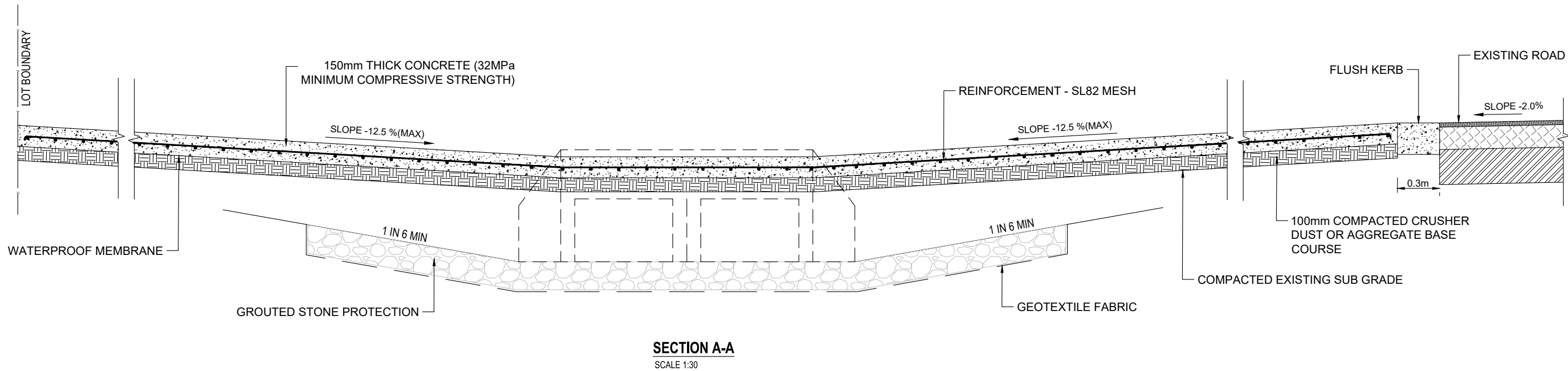
| | | | | |
|-----|------------|-------|------|-------------------------|
| | | | | |
| | | | | |
| C | 01/07/2024 | IS | DPS | SECOND AMENDMENT |
| B | 17/10/2019 | PH | PH | FIRST AMENDMENT |
| A | 15/12/2016 | PH | PH | ORIGINAL ISSUE |
| REV | ISSUE DATE | DRAWN | CHK. | ISSUED FOR OR AMENDMENT |



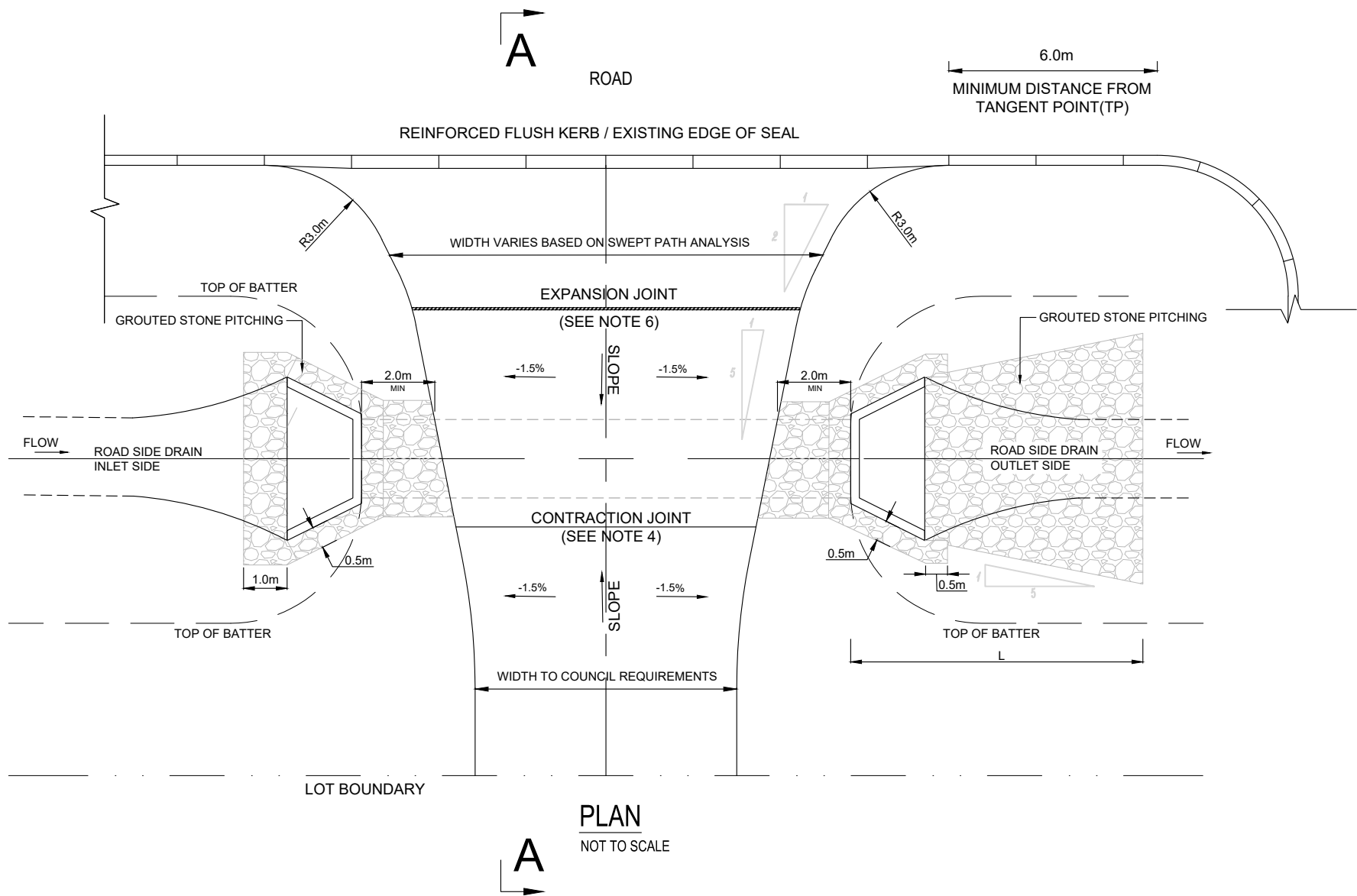
| | |
|----------------|--|
| PROJECT TITLE: | STANDARD DRAWING |
| DRAWING TITLE: | STANDARD COMMERCIAL CONCRETE CROSSOVER |

| | |
|------------------|--|
| SURVEY DATUM | City of Karratha Lot 1083 Welcome Road PO Box 219 - Karratha Western Australia 6714 Em:enquiries@karratha.wa.gov.au Ph: 08 9186 8555 |
| HORIZONTAL DATUM | |
| VERTICAL DATUM | COPYRIGHT |
| MAP PROJECTION | The concepts and information contained in this document are the Copyright of City of Karratha. Use or copying of the document in whole or part without written permission of City of Karratha constitutes and infringement of copyright. |

| | | | | | |
|--------------|------------|----------|------------|------|----|
| DRAWN BY: | IS | SCALE: | AS SHOWN | SHT: | A3 |
| DESIGNED BY: | IS | DRG. NO: | E-2016-014 | REV: | C |
| CHECKED BY: | DPS | | | | |
| APPROVED BY: | DPS | | | | |
| DATE: | 01/07/2024 | | | | |



SECTION A-A
SCALE 1:30



GENERAL NOTES

- COUNCIL STANDARD CROSSOVER FOR COMMERCIAL AND INDUSTRIAL IS 6m WIDE.
- CROSSOVER CONCRETE SLAB TO BE 150mm THICK WITH SL82 MESH REINFORCEMENT PLACED CENTRALLY WITH A WATERPROOF MEMBRANE.
- EXISTING CONCRETE KERB (OTHER THAN FLUSH KERB) SHALL BE REMOVED AND THE EDGE OF SEAL SAW-CUT TO GIVE A TRUE AND NEAT EDGE.
- CONTRACTION JOINTS SHALL BE 20mm DEEP AND 5mm WIDE AND FORMED WITH A CUTTING TOOL AT 3m INTERVALS.
- CONCRETE SHALL HAVE A MINIMUM COMPRESSIVE STRENGTH OF 32MPa AT 28 DAYS.
- IF THE CROSSOVER IS 12m OR OVER IN LENGTH THEN AN EXPANSION JOINT IS REQUIRED AT 6m INTERVALS. EXPANSION JOINT TO BE 15mm WIDE AND FILLED WITH BITUMINOUS IMPREGNATED PARTICLE BOARD STRIP OR OTHER APPROVED MATERIAL EXTENDING FOR THE FULL WIDTH AND DEPTH OF THE CONCRETE. THE FILLER SHALL BE PLACED PRIOR TO CONCRETE BEING POURED.
- THE MAXIMUM GRADE FOR THE VERGE TO BE 2%.
- ROCK PROTECTION SIZES TO BE AS PER MAIN ROADS WA SPECIFICATION 406
- FOR REINFORCED CONCRETE PIPES, REFER TO MAIN ROADS WA STANDARD DRAWINGS 201131-0061-4, 201131-0062-4 & 201131-0063
- FOR REINFORCED BOX CULVERTS, REFER TO MAIN ROAD WA STANDARD DRAWINGS 201131-0064, 201131-0065 & 201131-0066.
- LENGTH OF OUTLET ROCK PROTECTION, L,

PIPE DIA D ≤ 450mm, L=4 D

PIPE DIA D ≥ 450mm ≤ 1500mm, L=6 D

PIPE DIA D ≥ 1500mm ≤ 2500mm, L=8 D

| REV | ISSUE DATE | DRAWN | CHK. | ISSUED FOR OR AMENDMENT |
|-----|------------|-------|------|-------------------------|
| C | 01/07/2024 | IS | DPS | SECOND AMENDMENT |
| B | 17/10/2019 | PH | PH | FIRST AMENDMENT |
| A | 15/12/2016 | PH | PH | ORIGINAL ISSUE |

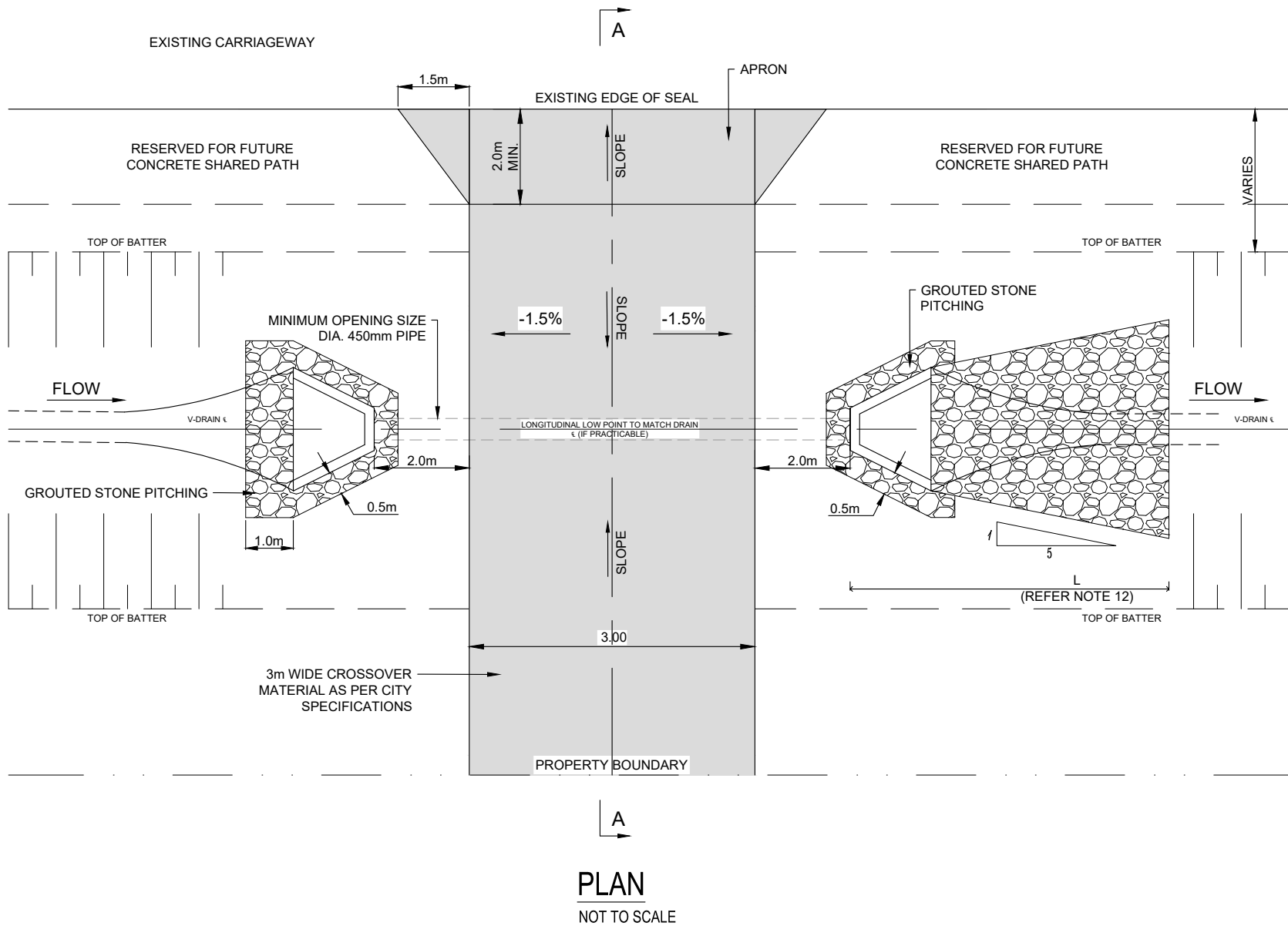
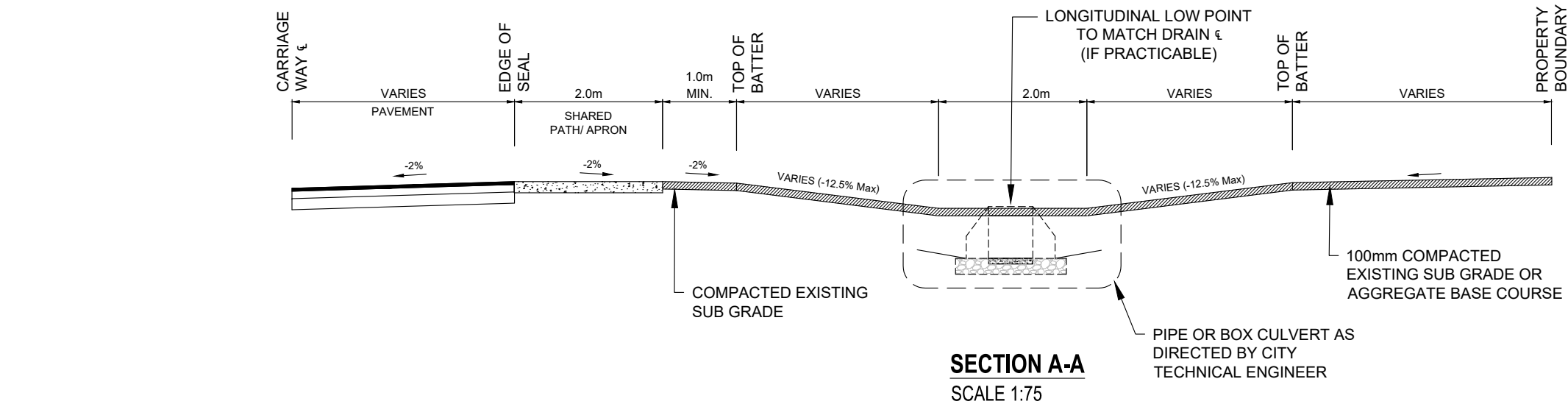


| | |
|----------------|--|
| PROJECT TITLE: | STANDARD DRAWING |
| DRAWING TITLE: | STANDARD COMMERCIAL CONCRETE CROSSOVER WITH BOX CULVERTS |

| | |
|------------------|--|
| SURVEY DATUM | City of Karratha Lot 1083 Welcome Road PO Box 219 - Karratha Western Australia 6714 Em:enquiries@karratha.wa.gov.au Ph: 08 9186 8555 |
| HORIZONTAL DATUM | |
| VERTICAL DATUM | COPYRIGHT |
| MAP PROJECTION | The concepts and information contained in this document are the Copyright of City of Karratha. Use or copying of the document in whole or part without written permission of City of Karratha constitutes and infringement of copyright. |

| | |
|--------------|------------|
| DRAWN BY: | IS |
| DESIGNED BY: | IS |
| CHECKED BY: | DPS |
| APPROVED BY: | DPS |
| DATE: | 01/07/2024 |

| | |
|----------|------------|
| SCALE: | AS SHOWN |
| DRG. NO: | E-2016-015 |
| SHT: | A3 |
| REV: | C |



GENERAL NOTES

- 1. COUNCIL STANDARD CROSSOVER FOR COMMERCIAL AND INDUSTRIAL IS 6m WIDE.
- 2. CROSSOVER CONCRETE SLAB TO BE 150mm THICK WITH SL82 MESH REINFORCEMENT PLACED CENTRALLY WITH A WATERPROOF MEMBRANE.
- 3. EXISTING CONCRETE KERB (OTHER THAN FLUSH KERB) SHALL BE REMOVED AND THE EDGE OF SEAL SAW-CUT TO GIVE A TRUE AND NEAT EDGE.
- 4. CONTRACTION JOINTS SHALL BE 20mm DEEP AND 5mm WIDE AND FORMED WITH A CUTTING TOOL AT 3m INTERVALS.
- 5. CONCRETE SHALL HAVE A MINIMUM COMPRESSIVE STRENGTH OF 32MPa AT 28 DAYS.
- 6. IF THE CROSSOVER IS 12m OR OVER IN LENGTH THEN AN EXPANSION JOINT IS REQUIRED AT 6m INTERVALS. EXPANSION JOINT TO BE 15mm WIDE AND FILLED WITH BITUMINOUS IMPREGNATED PARTICLE BOARD STRIP OR OTHER APPROVED MATERIAL EXTENDING FOR THE FULL WIDTH AND DEPTH OF THE CONCRETE. THE FILLER SHALL BE PLACED PRIOR TO CONCRETE BEING POURED.
- 7. THE MAXIMUM GRADE FOR THE VERGE TO BE 2%.
- 8. ROCK PROTECTION SIZES TO BE AS PER MAIN ROADS WA SPECIFICATION 406
- 9. FOR REINFORCED CONCRETE PIPES, REFER TO MAIN ROADS WA STANDARD DRAWINGS 201131-0061-4, 201131-0062-4 & 201131-0063
- 10. FOR REINFORCED BOX CULVERTS, REFER TO MAIN ROAD WA STANDARD DRAWINGS 201131-0064, 201131-0065 & 201131-0066.
- 11. LENGTH OF OUTLET ROCK PROTECTION, L,

PIPE DIA D ≤ 450mm , L=4 D PIPE DIA D ≥ 450mm ≤ 1500mm, L=6 D PIPE DIA D ≥ 1500mm ≤ 2500mm, L=8 D

| | | | | |
|-----|------------|-------|------|-------------------------|
| | | | | |
| | | | | |
| C | 01/07/2024 | IS | DPS | SECOND AMENDMENT |
| B | 17/10/2019 | PH | PH | FIRST AMENDMENT |
| A | 15/12/2016 | PH | PH | ORIGINAL ISSUE |
| REV | ISSUE DATE | DRAWN | CHK. | ISSUED FOR OR AMENDMENT |



| | |
|----------------|---|
| PROJECT TITLE: | STANDARD DRAWING |
| DRAWING TITLE: | STANDARD DAMPIER REAR ACCESS RESIDENTIAL CROSSOVER |

| | |
|------------------|--|
| SURVEY DATUM | City of Karratha Lot 1083 Welcome Road PO Box 219 - Karratha Western Australia 6714 Em:enquiries@karratha.wa.gov.au Ph: 08 9186 8555 |
| HORIZONTAL DATUM | |
| VERTICAL DATUM | COPYRIGHT |
| MAP PROJECTION | The concepts and information contained in this document are the Copyright of City of Karratha. Use or copying of the document in whole or part without written permission of City of Karratha constitutes and infringement of copyright. |

| | | | | | |
|--------------|------------|----------|------------|------|----|
| DRAWN BY: | IS | SCALE: | AS SHOWN | SHT: | A3 |
| DESIGNED BY: | IS | DRG. NO: | | REV: | |
| CHECKED BY: | DPS | | | | |
| APPROVED BY: | DPS | | | | |
| DATE: | 01/07/2024 | | E-2016-017 | | C |